

## GSDCA GRADINGS - INFORMATION FOR JUDGES

Application of criteria for awarding GSDCA Gradings to exhibits at GSDCA approved shows. Dentition information on Page 2.

Show Grading	Item	Description
Excellent	Animal must be exhibited in Open Class Breed Survey classified Faultless, gapless, healthy dentition May have slightly level bite, but without wear Double P1's allowed	Acceptable size limits: Males: Maximum 67cm and Bitches: Maximum 62cm Firm outgoing character Gun test -firm, self-assured, calm, indifferent. May display initial brief reaction, however, standing its ground showing full recovery after retest
Very Good	Not quite correct scissor bite Missing one only Premolar 1 or Molar 3 or Incisor Slightly level bite	Slightly worn teeth, NOT due to age Firm, outgoing character Gun test- sufficiently firm -first shot initial reaction; upon retest; body language still uncomfortable however the dog stands its ground
Good	Missing two only Premolar 1's or one only Premolar 2 Missing one only Premolar 1 plus one only Incisor Missing one only Premolar 3	Missing two only Incisors or two only Premolar 2's Missing one only Premolar 2 plus one only Incisor Missing one only Premolar 2 plus one only Premolar 1 Firm character
Ungraded	Missing one only Premolar 3 plus one further tooth Missing one only Canine or one only Premolar 4 Missing one only Molar 1 or 2 Missing three or more teeth altogether	Bite is Level, or Undershot 2 mm or more, or Overshot Character that is not firm and outgoing Gun shy - reacts with shyness, body language indicates fear, (flight reaction)

### GRADING BY CLASS

Class	Age Group	Grading
Baby Puppy	3 months to 6 months	Very Promising, Promising, Ungraded
Minor Puppy	6 months to 9 months	Very Promising, Promising, Ungraded
Puppy	9 months to 12 months	Very Promising, Promising, Ungraded
Junior	9 months to 12 months	Very Promising, Promising, Ungraded
	12 months to 18 months	Very Good, Good, Ungraded
Intermediate	18 months to 36 months	Very Good, Good, Ungraded
Open	Under 24 months / Over 24 months and not surveyed	Very Good, Good, Ungraded
	Over 24 months & successfully surveyed	Excellent, Very Good, Good, Ungraded
Australian Bred	6 months and over	NO GRADINGS
State Bred	6 months and over	NO GRADINGS
All Neuter Classes	6 months and over	NO GRADINGS

### SIZE & CHEST PROPORTIONS

Dogs (cm)	Chest depth		Height description	Chest Depth		Bitches (cm)
	Minimum	Maximum		Minimum	Maximum	
60-61	27-27.5	28.5-29	Small	24.5-25	26-26.5	55-56
61-62	27.5-28	29-29.5	Under medium size	25-25.5	26.5-27	56-57
62-63	28-28.5	29.5-30	Medium size	25.5-26	27-27.5	57-58
63-64	28.5-29	30-30.5	Above medium size	26-26.5	27.5-28	58-59
64-65	29-29.5	30.5-31	Large	26.5-27	28-28.5	59-60
65-66	29.5-30	31-31.5	Very large	27-27.5	28.5-29	60-61
Above 66	30-30.5	31.5-32	Oversize	27.5-28	29-29.5	Above 61

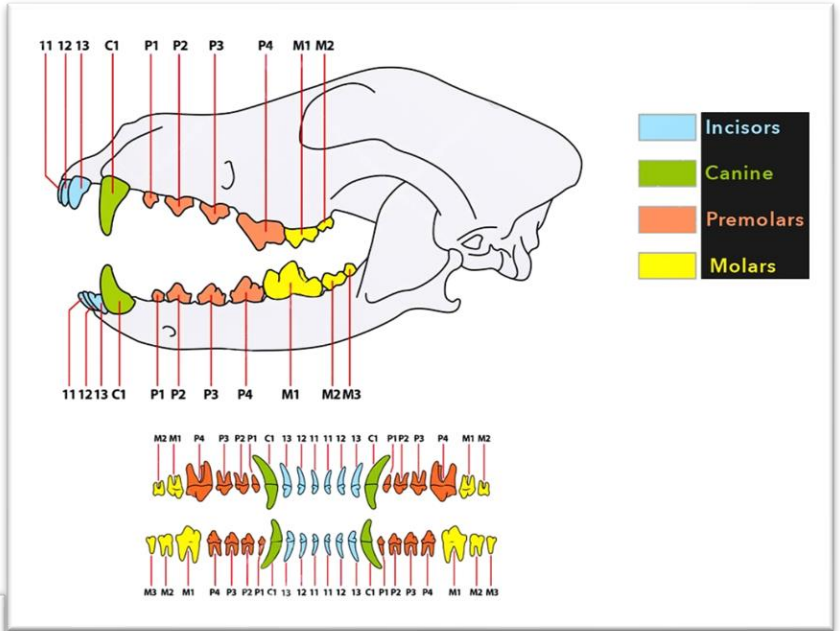
**GSDCA Regulation 2.14.2** - Gun Test for Excellent Grading (2017) The gun test will be conducted and apply to all animals exhibited in the Open Classes at all Member Club and/or sponsored shows where the GSDCA Excellent grading may be awarded.

It is accepted that observation of the gun test is subject to personal opinion; however, judges must act in accordance with the grading guidelines, remaining cognisant of the dog's body language after the gun has been fired. An allowance has been made in the Excellent grading accommodating a reaction and subsequent full recovery. However, if the dog's body language remains in flight mode after the second shot, and does not 'stand its ground', the dog should be penalised a grading as per the Grading table.



## Canine Dentition

The SV/FCI breed standard states 'The teeth must be strong, healthy and complete (42 teeth and in accordance with the dental formula)'. The German Shepherd Dog has a scissor bite, that is, the incisors must interlock like scissors, whereby the incisors of the upper jaw overlap those of the lower jaw. Occlusal overlay, overbite and retrusive (backward displacement) occlusion, as well as larger spaces between the teeth (gaps) are faulty. The straight dental ridge of the incisors is also faulty. The jawbones must be strongly developed so that the teeth can be deeply embedded in the dental ridge. (Donald, L. *The Definitive German Shepherd Dog*, 2022 p.925)

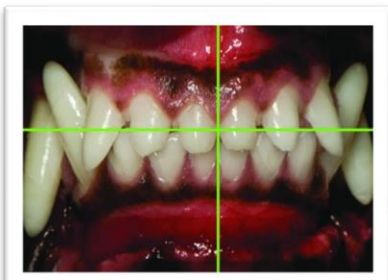


Credit. Rainer Lesniewski//Shutterstock



Pictured Top - correct meshing of premolars.  
Pictured Bottom - incorrect (Donald, L. 2022, p.932)

Pictured below - Dental arch, dental quadrant, and teeth numbering - upper (maxilla) arch and lower (mandible) arch. Each arch is divided by the midline. Teeth numbering is based on these dental quadrants. E.g. beginning from the midline the six incisors in each jaw are numbered upper left 3.2.1 - 1.2.3 upper right. (Donald, L. 2022. p.930)



Pictured above - correct bite viewed from the front. Pictured below - dropped lower incisors (Donald, L. 2022, p.943/4)

