

# THE German Shepherd Dog

## QUARTERLY NATIONAL REVIEW



The official magazine of the German Shepherd Dog Council of Australia Inc.

Winter 2016

### INSIDE

Dr Claire Sharp writes about Gastric Dilatation Volvulus (Bloat)  
Early Neurological Stimulus for new born puppies  
The Endurance Test. What does it take?  
The GSDCA's Database comes to a dog's rescue  
Our Clubs in the Spotlight: the GSDCQ showcase themselves!  
WA reports on their first Character & Working Assessment Test  
Education for our Youth - Heads, Ears & Eyes  
National Breed Commission Chair's Report  
Motions from the 2016 Annual General Meeting  
Plus much more...



[www.gsdcouncilaustralia.org](http://www.gsdcouncilaustralia.org)

# EVENT calendar

## GSDCA Events

### Date

11th - 12th February 2017  
19th - 21st May 2017  
29th - 30th July 2017

### Event

GSDCA Annual General Meeting  
45th National Show & Trial  
GSDCA National Breed Commission meeting

### Location

Melbourne  
Brisbane  
Adelaide

## Member Club Shows

### Date

14th August  
14th August 2016  
20th August 2016  
21st August 2016  
11th September 2016  
17-18th September  
1-2nd October 2016  
2nd October 2016  
8th & 9th October 2016  
23rd October 2016  
29-30th October 2016  
13th November 2016  
10th December 2016

### Event

GSDCV GSD Exhibition  
GSDCQ Members Competition  
Rick Richardson Memorial Championship Show  
Walter Martin Memorial Championship Show  
GSDCQ State Breed Exhibition  
GSDCTas Championship Show  
ACTGSDA Championship Shows  
3rd Members Competition  
GSDL October Champ Show & Obedience Trial  
West Coast Challenge Championship Show  
GSDCV Championship Show  
Yea Kennel Club Championship Show  
GSDL Members Competition

### Location

Melbourne  
Queensland  
Perth  
Perth  
Queensland  
Tasmania  
Canberra  
Perth  
Sydney  
Perth  
Melbourne  
Melbourne  
Sydney

### Judge

Natalie Humphries (WA)  
Fay Stokes (NSW)  
Honey Gross-Richardson (WA)  
Greg Green (Victoria)  
Russell Wenham (Qld)  
Jenny Yuen (Vic) & Alastair Henderson (Vic)  
Stefao Beggiano (Ity) & Louis Donald (Qld)  
Natalie Humphries (WA)  
Fay Stokes (NSW)  
Harald Hohmann (Gmy)  
Harald Hohmann (SV) & Peter Flynn (SA)  
Sharon Ballantyne (Qld)  
Bruce Knight (WA)



[www.facebook.com/GSDCA](http://www.facebook.com/GSDCA)



[www.gsdcouncilaustralia.org](http://www.gsdcouncilaustralia.org)



[www.schaeferhunde.de](http://www.schaeferhunde.de)



# CONTENTS & contacts

## Contents

<i>President's Report .....</i>	<i>2</i>
<i>Editor's Report .....</i>	<i>3</i>
<i>Character &amp; Working Assessment .....</i>	<i>4</i>
<i>GSDCA Database.....</i>	<i>6</i>
<i>Hudson the Blood Donor .....</i>	<i>6</i>
<i>Judges Committee Report .....</i>	<i>7</i>
<i>Tassie in Flood.....</i>	<i>7</i>
<i>Veterinary Chat.....</i>	<i>9</i>
<i>GSDCA Website .....</i>	<i>12</i>
<i>Breeders Achievement Awards.....</i>	<i>13</i>
<i>Endurance Test.....</i>	<i>14</i>
<i>News from Member Clubs .....</i>	<i>17</i>
<i>Vale Helen Galbraith.....</i>	<i>21</i>
<i>Club Spotlight - QLD .....</i>	<i>24</i>
<i>Early Neurological Stimulation of Puppies .....</i>	<i>26</i>
<i>National Breed Commission Chair's Report .....</i>	<i>30</i>
<i>GSDCA Youth Education.....</i>	<i>34</i>
<i>Motions from the AGM .....</i>	<i>38</i>

## Contacts

### GSDCA EXECUTIVE

#### President

Vince Tantaro  
Ph: +61 402 145 184  
1220 Somerton Road,  
Oaklands Junction Vic. 3063  
e: president@gsdcouncilaustralia.org

#### Editor

Jacinta Poole  
Ph: +61 403 455 858  
5 Yangoora Court,  
Mount Waverley VIC 3149  
e: revieweditor@gsdcouncilaustralia.org

#### Secretary

Val Moody  
Ph: +61 3 5426 4286  
Mobile: +61 419 568 759  
PO Box 173, Macedon Vic 3440  
e: secretary@gsdcouncilaustralia.org

#### Treasurer

Jane Pike  
20 Conrad Road, Longwood SA 5153  
Ph: +61 8 8388 5181  
Mobile: +61 413 347 247  
e: treasurer@gsdcouncilaustralia.org

#### NBC Chairperson

Joylene Neddermeyer  
Ph: +61 8 8270 8994 (after 6pm SA time)  
Mobile: +61 402 800 163  
42 Tania Drive Aberfoyle Park SA 5159  
e: nbc@gsdcouncilaustralia.org

#### Judges Committee Chairperson

Robyn Knuckey  
55 Mary Street, Como, WA 6152  
Ph: +61 8 9450 7554  
Mobile: +61 435 789 442  
e: judgescommittee@gsdcouncilaustralia.org

#### Obedience Chairperson

John DeLucia  
Ph: +61 8 8522 1692  
Mobile: +61 417 811 787  
P.O. Box 1421, Adelaide SA 5001  
e: obedience@gsdcouncilaustralia.org

### GSDCA OFFICERS

#### Breed Health & Welfare Committee Chair

Dr. Candy Baker  
Ph: +61 409 168 299  
e: gsdhealth@gsdcouncilaustralia.org

#### HD Registrar

Doug West  
Ph: +61 8 8326 5392  
e: hded@gsdcouncilaustralia.org

#### National Identification Registrar

Adam Toretto  
Ph: +61 400 776 256  
e: identification@gsdcouncilaustralia.org

#### GSDCA Webmaster

Jacinta Poole  
e: website@gsdcouncilaustralia.org

#### GSDCA Website

www.gsdouncilaustralia.org

### GSDCA CONSULTANTS

#### GSDCA CONSULTANTS

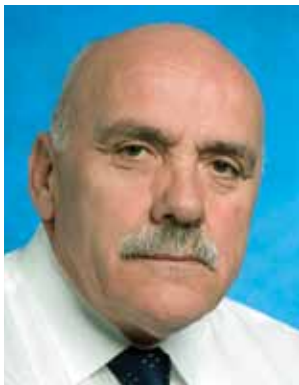
HD  
Dr Roger Lavelle  
Dr J. L. Richardson

#### Haemophilia

Dr Bruce Parry



# PRESIDENT'S report



Like many of you, I did enjoy reading the 2016 Autumn 'National' edition of this magazine. In many ways it reminded me of the original GSDCA Review as produced by the late Walter Reimann and taken to new heights by James Rodger. That original concept was held true with Yvonne Yun as Production Editor and Jacinta Poole as our new Editor producing a magazine that indeed showcased our major event for the year: namely the GSDCA National GSD Show & Trial and breed matters.

I again thank Yvonne for her commitment to the GSDCA Quarterly National Review and assisting in the seamless transition of the position to Jacinta during a period that did not allow much time before the Autumn edition had to go to print.

I for one am looking forward to reading this edition noting this will be Jacinta's first edition produced as Editor and no doubt her coming to the role will bring new ideas and direction.

I must congratulate the GSDL on the conduct of the 44th GSDCA National GSD Show & Trial. The event was held at what this year was an early Easter, which saw quite warm weather experienced over the three days. Despite entries being lost because of Easter, the National is still the largest single breed event in Australia. The organisation went very well. Greg Jones, Fay Stokes & Ann McKenzie and their teams must be thanked for their tireless work over the weekend. I was again pleased to see a number of members from other Member Clubs and the GSDCA Executive assisting over the weekend. Well, it is not long before the next National: this will be held in Brisbane on the 19, 20 & 21 May 2017 and hosted by the GSDC of Qld. Further this National will see 50 years pass since the first National was held by member Clubs on behalf of the Council.

I am happy to report that in response to concern expressed about credibility and governance of the GSDCA Breed Survey Scheme, the GSDCA Executive approved a working party made up of Melanie Groth, Janet Haase and I and ably assisted by Jane Pike and Jacinta Poole to set

as up as a first step an E-survey which has had an excellent participation with 250+ responding! Further clubs also held in house focus groups. The data as collected was used to help drive discussion at the 2016 GSDCA Breed Survey Forum held over the 2016 NBC / Judges Meeting weekend. It must be noted that this is the first review of the scheme since its introduction and the Executive has been heartened by the full participation by Member Clubs, the leadership / peer group and Club delegates who gave up valuable time and own money to attend a most important initiative. The forum has put in place a set of objectives that will be pursued by working parties and if enacted, see the GSDCA Breed Survey Scheme better placed to meet our long term goal: to only have breed surveyed animals bred with. A detailed report will be included in the next issue of this magazine and our website and no doubt recommendations and rationale as made by the working parties will be put to the 2017 GSDCA AGM for adoption.

I have been fortunate this year to have judged at a number of Member Club shows and with that am able to report that discussion held with the membership indicate there is a degree of excitement with the newer members who are participating and a degree of faction forming amongst those that have been around a long time. There is no doubt a change is taking place in how members react and act: we see members entering shows on one day and not the next, animals are entered but not exhibited and a growing practise that must be discouraged: handlers and owners back chatting and questioning judges in the ring. It is amazing what one can hear from inside the ring.

I was invited to give a Breed Lecture to aspiring instructors as part of their participation in the GSDC of Victoria Instructor Training Program. The one thing that struck me was that I also did the program 36 years ago and here I was in front of a group of individuals that want to assist this Club by becoming Obedience and or Show Instructors. Further it must be noted that the instructor pool in Victoria serves 11 branches and on a regular basis turn up each Sunday to take class: we are indeed fortunate that across our organisation we have many members who are indeed dedicated to the goals of their Member Club and or this Council!

As always I am available on 0402145184.

*Vince Tantara*

# EDITOR'S report

Welcome to the winter edition of the Quarterly National Review.

I hope to bring you interesting and informative articles that appeal to a broad cross section of the membership. With this in mind, contribution of photos or article ideas and submissions is always welcome for consideration. It is the member's magazine, so your involvement is welcome.

Thank you to our Queensland club who are the first cab off the rank with a 'spotlight' article. We're giving all member clubs the opportunity to share with the broader membership what, when, where and how they do things, club highlights and any achievements. It's an opportunity to showcase and share, with a little bit of self-promotion! Each club is vastly different so we look forward to learning about each club over the next editions.

Thank you to Dr Candy Baker, our Breed Health & Welfare Chair who has sourced a very interesting and relevant article on bloat – key reading for all, especially with regards to the signs to look out for.

The recent political and legislative changes in several of our member states demonstrates the pressure that animal organisations are under. As a fraternity we need to work together to ensure and secure our breeds future. The recent National Breed Commission Meeting agreed on some key directions to ensure we work towards this.

Finally, with this edition we welcome on board a new designer and print company. We look forward to a great partnership with Maroondah Printing in delivering our magazine.

Enjoy your reading !

*Jacinta*

# WORKING assessments

## The Character and Working Assessment

*The Character and Working Assessment (CWA) has been an ongoing and talked about project for many years now, with Western Australia being the main driving force behind having this taken up by all affiliated clubs and administered by the German Shepherd Dog Council of Australia.*

*This CWA is a small but important step to move us in the direction of having an assessment that all owners can participate in with their pets, whether obedience or conformation dogs.*

*The manual is now on the GSDCA website and all clubs have a copy also. We have attempted to maintain simplicity in the assessment with the emphasis being on encouraging all to participate in the assessment. The assessment is designed so that both the GSDCA and individuals can together help to improve and promote our breed.*

*The assessment comprises of 6 sections and 12 phases in total. The animal's responses to each of the sections is evaluated and assessed accordingly. The assessment will be overseen by Breed Surveyors, GSDCA Badged Obedience Judges and Obedience Instructors as appointed by their club. This way, we are encouraging participation by various club leaders and utilising the expertise of those from both conformation and obedience backgrounds.*

*We trust that this assessment will be well received and will have planted the seed for future breed improvement and development.*

*John De Lucia*

The National Council Obedience Chair has asked me if I would put together an article to offer the clubs around Australia a brief description, along with pictures and words, of a Character and Working Assessment which is being run by the GSDA of WA (Inc). I hope it gives all clubs some encouragement to run an Assessment at their club. I believe that once the clubs have run their own Assessment they will realise that the Assessment is achievable and relatively easy once the course has been set up.

Below is an explanation of each stage with associated images from our test.

This is the start of the assessment when the dogs entered are individually checked for their micro chip number by the Assessors. In this case the assessors are John Fenner and Bruce Knight.



The first exercise is to walk the dog on a loose lead across a Tarpaulin which should be about 6m long and must be pegged down. The recommended length of lead for this exercise is a 1 or 2 metre lead. The dog should show confidence while walking on the Tarp. There is no requirement for precision.



The second exercise is the plastic mesh which again should be about 6m long and once again the dog should show confidence while walking on the mesh. As above there is no requirement for precision.



We had 7 animals entered in this specific Character & Working Assessment with 5 successful participants and 2 re-presents. The names of the animals presented are listed at the end of this article. I hope that the Clubs will endeavour to arrange at least one CWA this year and supply feedback to the Council Chair, John De Lucia so that it can be discussed in depth at the next GSDCA AGM.

This is the umbrella test, where an umbrella is opened as the dog approaches. The dog may be a little unsure at first but should recover quickly to investigate the object, in this case an umbrella being opened. This exercise simulates an everyday event.





# WORKING assessments

The dog must pass a car just as the door is about to be slammed shut. The dog must pass the radio with loud music coming from it. We sometimes use the Car Radio but find the radio on the ground is more effective. This double exercise is to evaluate the dog's response to the two different noises (Car door being slammed shut and the radio being played quite loudly).



Above: The Car Door Test

Left: The Radio Test

These are two pictures are of the bike rider passing the dog. The dog should be confident enough to ignore the bike rider as he passes. The dog should be confident as the bike rider approaches from the front and then from the back. The dog can be a little unsure at first but should be able to recover from this fairly quickly.



The dog must be have a friendly stranger approach the handler ready to greet and shake hands with her.



The friendly stranger then greets the dog after approaching the handler. Obviously from the photos of the greeting is of two different handlers, but does show the two stages of the greeting.



The crowd part of the Assessment. The dog is to show no sign of fear and should walk into the crowd of people confidently. The dog and handler should walk through the crowd two or three times leaving when asked to do so by the Assessor.



Stand for examination. The dog should be able to stand without backing away from the assessor and be comfortable when the assessor examines the dog .



# WORKING assessments

The dog should be able to play with and retrieve a toy. The handler is allowed to encourage the dog to take part in this exercise. Two different dogs shown in the pictures.



The dogs lined up for the gun test. The dogs must stand sufficiently firm and confident showing no real concern for the shots discharged. The desired reaction is one of total lack of concern. It is worth noting here that all dogs entered passed the gun test with flying colours.



*I hope you have enjoyed having a look at the Character and Working Assessment that was run by the German Shepherd Dog Association of WA on Sunday the 3rd of April 2016 and that it will encourage you all to run an assessment of your own.*

The animals that took part in the GSDA of WA (Inc) Character and Working Assessment on the 3rd April 2016 were:-

Hausosin Zsiga  
Alderhaus Unique Udolpho TD  
Billie  
Hausosin Ziva  
Seigen Suris Alfie BSC1 AZ  
Grandwest Malisas Gold Logie  
Volscaro Ciao Bella BSC1 AZ ET CCD

As you can see there was a good cross section of animals entered. These being:-

- 1 animal from the general obedience membership of the club.
- 1 animal from the more senior part of the obedience fraternity of the club.
- 2 young animals from the show section of the club
- 3 more senior animals from the show fraternity one of which has been involved in the obedience section also.

Five of the dogs entered passed with ease and two of them were advised to re-present at another C & WA.

*Ian Marr*

GSDA of WA President.





## GSDCA database to the rescue

On the Saturday afternoon of the recent National, I received a call from my mate Jay back in Melbourne who had discovered a wandering GSD out the front of his home. Living a short distance from us, his immediate thought was to ring me to check if I knew someone else in the area with a pedigreed Shepherd. There was only one that I could recall, which was a long coat. No help there. Check for a tattoo. Yes she has one. We got back a prefix and with National Council's Database Co-ordinator Frank Moody in the next tent, we set about trying to locate the owner of this wayward bitch.

Our first attempt did not come up with anything concrete so back to Jay to double check the tattoo. Our second effort zeroed in on Sunhaze Kennels in Newcastle. Toni and Greg were very helpful but it seemed there was no record for the bitch in question. So back to the drawing board. Reading a microchip was our next step, but that meant going to a vet which in turn could have resulted in the dog being carted off to the local pound and from there who knows. But wait there's more.....in the meantime Toni Gale had kept checking records and had now come up with some details. A quick call was made to the owner who, believe it or not, wasn't aware the dog was on the loose. Tony messaged me with a contact number and name of the owner. I forwarded that on to Jay and Jay rang the owner, who promptly rushed around and picked up the dog.

All of that took exactly forty two minutes which is a fantastic testament to the database set up by Frank Moody and Daryl Bourke on behalf of National Council. To have so much critical information which can be accessed by members at any time is a fantastic safety net for our Breed when required. I would urge any member who hasn't visited the database to have a look: it is a fantastic resource for us all!

Congratulations to all concerned. A great result.

*Terry Tarkus*  
GSDCV



The GSDCA Dog Database

## Hudson The Blood Donor

Recently one afternoon I received a call from my veterinary hospital asking if Hudson (Jayshell Crockett) would be able to donate blood. The clinic apparently had a 10 year old male dog called Mickey who had had emergency surgery to remove his spleen. He had lost a lot of blood and was in dire need of a blood transfusion. The hospital had called all the usual suppliers, emergency hospitals and other clinics, but there was no blood to be had. They needed their own donor and they immediately thought of Hudson who they said fitted the bill as he was a large dog, calm & well behaved. I asked when they needed the blood & I was told NOW. So I dashed home, put both my dogs in the car and rushed off to the Kingston Veterinary Hospital where Hudson and I were rushed out the back to see the patient and prepare Hudson for the transfusion. I left Hudson surrounded by his adoring fans.

Late in the afternoon my vet dropped Hudson off at my house with a beautiful card, orchid plant and a bag of doggy treats from Mickey's grateful owner. Mickey had survived the ordeal and had been transferred to the emergency hospital for ongoing monitoring through the night. My vet was hopeful of a full recovery.

So my Hudson is quite a hero & yes he did get a biscuit (but not a cuppa), when it was all over!

*Jenny Lord & Hudson*



**Do you have a good story or a tale to tell ?  
Or a photo you'd like to submit?**

**We'd love to hear from you and see it in print.  
Send it to us at [revieweditor@gsdcouncilaustralia.org](mailto:revieweditor@gsdcouncilaustralia.org)**





## Judges Committee Report

At the time of writing this report, the GSDCA Judges Committee will be held in one week, on the final weekend in July. From the Chair Report, some issues/points highlighted are succession planning and looking to the future. With that in mind, we have a working party of younger members looking at the GSDCA National, to look at what they believe will make our premier event relevant into the future. This working party is Sharon Ballantyne (Qld), Jess Kada (NSW) and Andrew O'Loughlin (SA). We look forward to seeing their ideas and vision.

For 2016 there are 45 Specialist Shows scheduled where GSDCA gradings are awarded, this is 6 more than 2015 and 9 more than 2014. The other major change is the significant increase in the number of shows judged by Australian Specialist Judges. In 2015, with 9 international judges plus the National 2 SV judges, in 2016 4 plus the National judges. For Australian Specialist Judges, in 2015 there were 29 shows and in 2016 there are 40 shows.

There are now GSDCA Specialist Judges qualified as ANKC Assessor Judges in all states, except Victoria. Two judges in Victoria are scheduled to complete their accreditation at the next lecture with Dogs Victoria. Then, when GSD judges are completing their practical examination to be elevated to a Championship Show Judge, there will GSDCA Specialist Judges to be a part of the adjudicating team. This helps our breed members going through the ANKC training scheme to have Examiner Judges that know the breed well.

There are currently three participants in the GSDCA Specialist Judges Extension Course. Sharon Ballantyne (Qld), Salvatore Pittelli (SA) and Jenny DeLucia (SA). Sharon and Salvatore are moving towards the end of the Scheme, with needing to complete their second Examination in Phase 2 of the Scheme. Once that is completed, then the final assessment will be when they are judging. Two GSDCA Specialist Judges, nominated by the Judges Committee Chair, will provide assessment on that show. These two judges will be the first to be assessed via this process. Jenny DeLucia is scheduled to complete her next assessment in August.

There are a number of discussion items tabled for the meeting in July, these include feedback on the National Show Discussion Paper circulated to all clubs, Code of Conduct of Judges and Social Media, reviewing set trophies for GSDCA Nationals, consideration for applying to the ANKC for a permanent date for the GSDCA National, updates to National and SBE's around Breeders Groups and review of suggested designs for new gold, silver and bronze medallions for GSDCA Nationals.

Any outcomes decided from the GSDCA Judges Committee Meeting is then tabled on the following GSDCA AGM to be decided by the members.

If any members wish to discuss any concerns, issues or ideas pertaining to this portfolio or any information about shows or judging in general, I am available on 0435 789 442 or [judgescommittee@gsdcouncilaustralia.org](mailto:judgescommittee@gsdcouncilaustralia.org)

*Robyn Knuckey*

GSDCA Judges Committee Chair

## 'Tassie in Flood'

In June 2016 the Derwent River broke its banks and flooded the beautiful GSDCT ground on the Esplanade at New Norfolk in Tasmania. Unfortunately the club house was inundated with water and there was extensive damage to the building and club equipment.

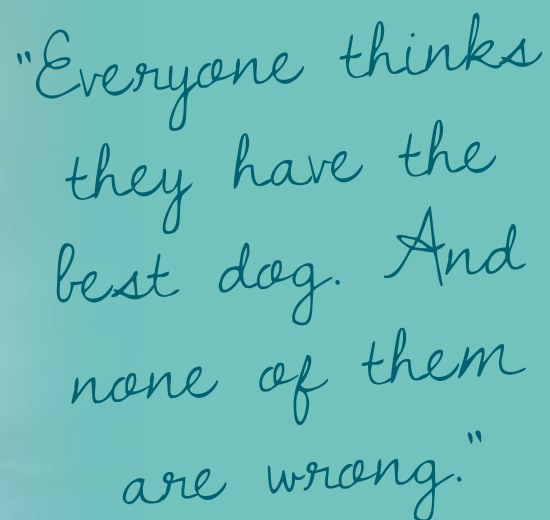
A small group of volunteers quickly rallied to start the clean-up task and after several trips to the local tip, the industrial blow dryers were spinning. Building repairs and the purchase of new equipment will progress shortly once the river banks dry out.

The Club has been very fortunate to be provided with a Disaster Assistance Grant of \$2000 by the Tasmanian Government to help with the repair and replacement task. We have also been overwhelmed by wonderful donations from the GSDCA, and from member clubs across the country.

With this generous assistance we will be up and running in time for our Breed Survey and back to back Championship Shows in September.

It is certainly heart-warming to experience the generosity of our fellow GSD lovers!





Please note the following changes to the cost of forms from **1 July 2016**.

HD/ED Form – Hips & Elbows	\$68.00
HD/ED Form – Hips only	\$50.00
HD/ED Form – Elbows only	\$33.00



**Schweikert**  
Hundesportartikel



**F10** Australasian agent for F10 biosecurity and hygiene products.



- **Whelping Supplies / Puppy Packs**
- **Health / Performance Supplements**
- **Training Equipment**
- **Ear Support Kits**
- **Show Supplies**
- **Bulk Discounts available**

The collage features a variety of objects: a white bottle of Ipratropium Bromide (IPRATROL) with a blue label, a metal strainer, a metal bowl, a jar of SuperHeal, a metal lid, a metal cup, a red soccer ball, a yellow balloon, a spray bottle, a pair of black shoes, a row of colorful pens, a pair of green and blue sneakers, and a box of ResveraDog Trans-Resveratrol 50mg. The box also features a picture of a dog and the text '60 SERVINGS'.



## Biographical sketch

### Claire R. Sharp

Claire R. Sharp BSc BVMS, MS, DACVECC

Section of Small Animal Emergency and Critical Care

Senior Lecturer; School of Veterinary and Life Sciences, College of Veterinary Medicine, Murdoch University, Murdoch, Western Australia

Adjunct Assistant Professor; Department of Clinical Sciences, Tufts Cummings School of Veterinary Medicine, Tufts University, Massachusetts, USA

Visiting Scientist; Broad Institute of Harvard and MIT, Cambridge, Massachusetts, USA

Dr Claire Sharp is a specialist in small animal emergency medicine and critical care and a senior lecturer at Murdoch University. Dr Sharp studied veterinary medicine and surgery at Murdoch University, in Australia, graduating in 2002. She completed her rotating small animal internship at Oklahoma State University in the United States, followed by an internship and residency in small animal emergency and critical care at the University of Missouri. Dr Sharp received her Masters of Veterinary Clinical Sciences and became a Diplomate of the American College of Veterinary Emergency and Critical Care in 2010. Dr Sharp worked for 6 years in the section of emergency and critical care at the Tufts University Veterinary school outside of Boston, MA, and recently returned to Murdoch for an academic position. Her primary clinical interests are the diagnosis and management of the systemic inflammatory response syndrome, sepsis, shock, GDV (gastric dilatation and volvulus, or bloat), polytrauma, and respiratory distress. Dr Sharp's research endeavors have involved epidemiologic studies of trauma and sepsis in dogs and cats, and identifying clinically relevant biomarkers for the diagnosis and prognostication of emergency room diseases such as sepsis, feline asthma and hemangiosarcoma. Dr Sharp's current research includes a large study to investigate the causes of bloat in dogs, including the genetic features of at risk breeds that make them predisposed. At Murdoch, Dr Sharp is involved in the clinical instruction and mentoring of 5th year students, 2 critical care residents and 1 intern, as well as lecturing for the third and fourth year students.

Many thanks go to Dr Claire Sharp BSc BVMS(Hons) MS DACVECC for writing this article for the GSDCA.

## Gastric dilatation and volvulus in German Shepherd Dogs

### *What we know and where we are going*

***Gastric dilatation and volvulus (GDV), commonly known as bloat, is a common disease in large and giant breed dogs. In GDV the stomach distends with gas and rotates on its axis, resulting in compromise of blood flow to the stomach itself, the spleen and other abdominal organs. GDV causes dogs to go into shock and can be rapidly life threatening without appropriate treatment.***

### ***Breed predispositions for GDV***

German Shepherd dogs are one of the most commonly represented dog breeds affected with GDV. In a study that I performed at my previous hospital in the United States, German Shepherds were the single most common purebred dog seen with GDV, comprising more than 20% of all dogs with GDV. Other commonly affected breeds include the Great Dane, Weimaraner, Saint Bernard, Gordon Setter, Irish Setter and Standard Poodle. We also see GDV in a reasonable number of Labrador and Golden retrievers; at least in part because these are very common breeds.

### ***What causes GDV?***

We don't yet know what causes GDV but several large studies have investigated risk factors for the development of GDV in affected breeds. We do know that genetics have some influence in the disease, given that GDV runs in breeds and runs in families within a breed. However, genetics are not the sole determinant of whether a dog will develop GDV. Although different studies have slightly different findings, generally considered risk factors for developing GDV include first degree relatives that have had GDV, higher thoracic depth to width ratio, lean body condition, advancing age, eating quickly (in large but not giant breed dogs), stressful events (eg. boarding, traveling or a vet visit), fearful, nervous or aggressive temperament; and several diet-related factors, including having a raised food bowl, being fed only dry food and/or a single large meal each day. My research is aimed at finding out more about the how genetics and other factors influence disease risk (more below).

## Clinical signs

Symptoms of the development of GDV that dog owners may notice at home include restlessness, drooling, nonproductive retching and abdominal distention. It is important to note that many dogs do not have obvious abdominal distention despite having GDV. Given how common this disease is in affected breeds, we recommend that dogs should be checked by a veterinarian for any behavior that is significantly out of the ordinary for them. This is particularly important for GDV, since the earlier we catch the disease, the more likely we are to be successful at treating it.

When examined at the time of presentation to a veterinary clinic dogs with GDV present with signs of shock. This includes a high heart rate and weak pulses. Some dogs are completely collapsed by the time they arrive at the vet, while others are still able to walk in (and others can even still be wagging their tail). Abdominal palpation may reveal a distended and tympanic (drum like) stomach, however in other dogs the stomach is all up under the rib cage and so cannot be palpated. A key abnormality on abdominal palpation is that the spleen becomes enlarged and displaced towards the back of the abdomen.

This combination of clinical signs and findings on examination result in a high index of suspicion for GDV in a predisposed dog breed.

## Diagnosis

Basic diagnostic tests, including x-rays and blood tests, are usually performed very shortly after dogs with GDV arrive at the hospital. A right lateral abdominal x-ray is necessary to confirm the diagnostic suspicion of GDV. The x-ray is used to confirm that the stomach is distended with gas and has flipped on its axis. An example x-ray is shown in Figure 1. Basic blood tests are indicated to evaluate fluid and electrolyte balance, blood lactate and rule out organ dysfunction. Chest x-rays are often recommended given that about 15% of dogs with GDV have pneumonia, and to look for evidence of cancer in older dogs.

## Treatment

Treatment of GDV involves medical management followed by emergency surgical intervention and good post-operative care.

The goal of medical management is to stabilize the dog cardiovascularly to give them the best chance of doing ok during surgery and anesthesia. Medical management should occur promptly, so as to minimize delays to surgery, given that surgery is required to fix the condition.

Medical management involves placement of one or more intravenous catheters and administration of intravenous fluids (which helps with shock). Pain relief is also provided early in treatment as this condition is suspected to be extremely painful. If the distended, gas filled stomach can be easily palpated beyond the rib cage, a needle or catheter can be used to relieve some of the gas pressure that builds up in a procedure known as percutaneous trocarization. This involves clipping the fur over the gas-distended stomach, cleaning the skin with an antiseptic, and passing a large needle or catheter through the skin and into the stomach to release gas. This procedure however is not always possible as the distended stomach may be up under the rib cage. Risks vs. benefits of this procedure are weighed up on a case-by-case basis. The potential benefit is that releasing some of the gas pressure in the stomach can help restore blood flow to the heart and improve shock. It may also improve blood flow to the stomach wall itself. Additionally, relieving some of the pressure in the stomach may make it easier to de-rotate the stomach at surgery. Potential risks of trocarization include accidental internal bleeding (from the stomach wall itself, or from damaging the spleen), and making a hole in the stomach that leaks food into the abdomen.

Surgery is usually performed on an emergency basis. Following general anesthesia, surgery involves de-rotating and decompressing the stomach, followed by a gastropexy. De-rotating refers to flipping the stomach back into its normal position, this allows blood flow to return to the stomach. Decompressing involves getting the accumulated gas out of the stomach, this is usually done by placing a stomach tube at surgery. A gastropexy involves stitching the stomach to the body wall, in a normal position. When this pexy has healed, it prevents the stomach from being able to flip again.

Other additional procedures may also be performed at the time of surgery in some dogs. If part of the stomach wall has died due to compromised blood supply, the nonviable part of the stomach is removed at surgery (gastrectomy). Additionally, if foreign material is present in the stomach, this may be removed at the time of surgery. Unfortunately in some dogs, all of the stomach is dead at the time of surgery. This is a devastating complication for which we recommend euthanasia. If part or all of the spleen has died, the nonviable tissue is removed at surgery (splenectomy). In some dogs, the stomach bursts before surgery as the stomach wall dies and gas pressure builds up. This causes release of stomach contents (partly digested food and gastric acid) into the abdominal cavity, which results in an abdominal infection called septic peritonitis. This is a very challenging complication to manage. Surgery can take anywhere between 1 and 3 or 4 hours depending on the severity of the compromise to the abdominal organs and the exact procedures the surgeon has to perform.

## Post-operative care and prognosis

Following GDV surgery, dogs generally require 2-4 days of hospitalization for recovery. Intravenous fluids and pain relief medications are continued post-operatively. Additionally, because of the insult to the stomach, treatment with antacids, anti-nausea medications and stomach protectants is usually initiated. Monitoring includes assessing heart rate and rhythm, monitoring body temperature (as a post-operative fever could be a sign of infection), comfort levels, fluid and electrolyte balance and organ function. Once dogs start eating and drinking after GDV surgery we are able to transition them off their intravenous fluids and medications to tablets, and get them home. Full recovery can take a few weeks, especially in older dogs, because this is such a significant surgery.

Prognosis is generally good in dogs that receive appropriate aggressive medical and surgical treatment; with 70-90% of dogs surviving to leave the hospital. Unfortunately some dogs die at home overnight or while unattended during the day, as the disease can progress so rapidly. Additionally, some dogs are so sick that despite the highest level of care we are unable to reverse the course of their disease. As such, prevention is important where possible.

## Prevention

Prevention of GDV can be considered at the breed level, and on an individual dog basis. Although GDV does not follow a simple pattern of inheritance, the fact that it runs in breeds and families, suggests that removing dogs that have had GDV or a first degree relative with GDV, from the breeding pool where possible may reduce the prevalence of GDV in future generations. Obviously however, this is not always possible due to the multitude of factors that go into breeding decisions, and the fact that some dogs don't develop GDV until middle to older age after which they have already been used in breeding programs. Ongoing research to better understand the genetics of GDV will hopefully allow us to make more informed decisions regarding the selection of dogs for breeding.



For individual dogs, the main strategy for prevention is prophylactic gastropexy. This is the process of suturing the stomach to the body wall to prevent it from flipping on its axis. This procedure is done in all dogs at the time of surgically fixing their GDV, but can also be done prior to the development of GDV, so as to prevent it from occurring. Prophylactic gastropexy can be done as a routine abdominal surgery, or can be performed in a minimally invasive way with laparoscopy (ie. key-hole surgery) by experienced veterinarians / veterinary surgeons. Prophylactic gastropexy should especially be considered in dogs of at risk breeds already undergoing abdominal surgery such as for a spay.

## Current research:

The American Kennel Club Canine Health Foundation, with the support of dozens of breed clubs including the German Shepherd Dog Club of America, recently funded 2 research proposals (January 2014). These studies will be the largest of their kind ever undertaken to investigate GDV in dogs. These studies are designed to gain a better understanding of what causes GDV in dogs.

The study that I am involved in is entitled "Application of genomic and molecular methods to understanding the pathophysiology of gastric dilatation and volvulus in purebred dogs; a systems biology approach."

Our initial focus is in German Shepherd dogs given that is the most commonly affected breed across studies, and through our collaborations we have access to a large existing repository of DNA samples from GSDs at the Broad Institute.

**Acknowledgements:** I would like to acknowledge the Collie Health Foundation, Morris Animal Foundation, and American Kennel Club Canine Health Foundation for supporting current and future research in this area.

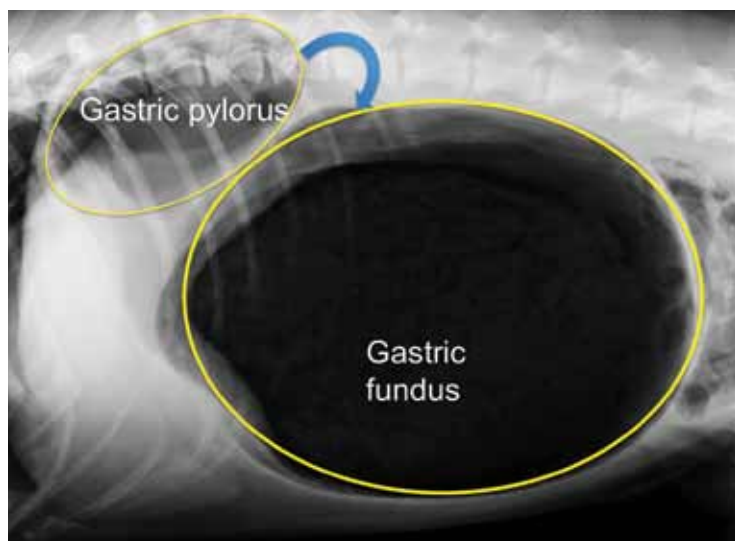


Figure 1.

## Summary Table

<b>What is GDV?</b>	A disease of large and giant breed dogs in which the stomach distends with gas and flips on its axis.
<b>Why is GDV life-threatening?</b>	Dogs with GDV go into shock and can develop abnormal heart rhythms, both of which can be fatal.  Some dogs also succumb to post-operative complications like pneumonia.
<b>What causes GDV?</b>	We don't know but likely a combination of factors. Known risk factors include: <ul style="list-style-type: none"> <li>• Genetics <ul style="list-style-type: none"> <li>o runs in breeds, and families</li> </ul> </li> <li>• Conformation: <ul style="list-style-type: none"> <li>o deep-chested dogs</li> <li>o lean body condition</li> </ul> </li> <li>• Temperament <ul style="list-style-type: none"> <li>o nervous, fearful, aggressive dogs at higher risk</li> <li>o associated with stressful events (eg. boarding)</li> </ul> </li> <li>• Diet / feeding: <ul style="list-style-type: none"> <li>o eating quickly</li> </ul> </li> </ul>
<b>Clinical signs</b>	At home: <ul style="list-style-type: none"> <li>• Non-specific signs – restlessness, drooling</li> <li>• Specific signs - non-productive retching, abdominal distention</li> <li>• Collapse in severe cases</li> </ul> At the vet: <ul style="list-style-type: none"> <li>• Signs of shock (high heart rate, weak pulses)</li> <li>• Distended tympanic stomach</li> <li>• Distended, caudally displaced spleen</li> </ul>
<b>Diagnostic approach</b>	<ul style="list-style-type: none"> <li>• Right lateral abdominal x-ray</li> <li>• Blood tests</li> <li>• Chest x-rays – rule out pneumonia, cancer</li> </ul>
<b>Immediate treatment</b>	<ul style="list-style-type: none"> <li>• Intravenous fluids</li> <li>• Pain relief</li> <li>• Consider percutaneous trocarization for decompression</li> <li>• Stomach tube placement (via mouth) once under anesthesia</li> </ul>
<b>Surgical treatment</b>	Should be initiated rapidly. Requires general anesthesia <ul style="list-style-type: none"> <li>• De-rotate and decompress the stomach</li> <li>• Gastropexy to prevent recurrence</li> </ul>
<b>Post-operative care</b>	Most dogs require 2-4 days of hospitalization after surgery <ul style="list-style-type: none"> <li>• Ongoing intravenous fluids and pain relief</li> <li>• Stomach protectants, antacids, anti-nausea medications</li> </ul>
<b>Prognosis</b>	Life-threatening without surgical intervention. 70-90% survival rates with treatment (medical and surgical).

## Have you visited the GSDCA Website lately?

*In mid 2015 the GSDCA website underwent an upgrade. It now has a fresh new modern look, is easy to navigate and has new and updated content. Recent news updates for members are easy to follow.*

### So, what will you find if you visit?

- Contact details for all National Council Executive and Officers, for those times when you need to talk to someone. Along with Officer and Service Award history
- A full list of all relevant GSDCA documentation. Such as Regulations, National Show & Trial manuals, Breed Survey manual, the Character & Working Assessment Manual and the most up to date Scale of charges
- Every form you need is readily available
- A simple link to the GSDCA database. Just login directly
- The GSDCA's Youth are featured
- You can view back issues of the Quarterly National Review magazine, and check out Annual Reports from National Council.

### Our Breed Pages cover everything you need

- Read the Breed Standard, full details on the Breed Improvement Schemes. On the Health and Welfare pages there is lots of relevant veterinary information.
- You can also fill in the GSDCA Health profile Form to provide us with information that might help other GSD's

### For the Show and Obedience fraternity, there are details of each discipline

- For show exhibitors, you can read critiques from all shows held around Australia in the last 12 months
- Find out what's involved in Endurance, Obedience, Tracking, Rally and other disciplines.
- View the Service Dogs who've received Canine Service Awards from the GSDCA. Quite a distinguished list!

For the historically minded, there are photos of all gold, silver & bronze medallists from all 44 National Shows. There is also a list of all gold, silver and bronze obedience medallists, along with the Winner of Winners and Dual Performance trophy winners listed for easy reference.

And there's also some pages just about dogs being dogs. Have you viewed the famous video of Dingo vom haus Gero gaiting? Well now you can, along with footage of the first GSD guide dog and some of the publicity events our dogs participate in.

*So head along and check it out. When there is NEWS for members, the website is where you will find it.*

*There's always something new to look at!*

[www.gsdcouncilaustralia.org](http://www.gsdcouncilaustralia.org)





# BREEDERS achievement awards

## Kennels Awarded GSDCA Breeders Achievement Awards Till December 2015

### 100 PLAQUES – BREEDERS ACHIEVEMENT AWARD

(for having breed 100 animals that have achieved the GSDCA 'A' stamp)

Andacht

Miss L A Reilly New South Wales

### 100 PLAQUE – BREEDERS ACHIEVEMENT AWARD

(for having breed 100 animals that have achieved the GSDCA 'Z' stamp)

Aimsway

J & L Martens New South Wales

### GOLD MEDALLION – BREEDERS ACHIEVEMENT AWARD

(for having bred 50 animals that have achieve the GSDCA 'A' stamp.)



Ameliaberg

Mrs H Gross-Richardson, Western Australia

Craisan

R & J Haysman, South Australia

Karraine

K & P Eaves-Tennant, Tasmania

Fremont

S, L & J Lynch, New South Wales

Vonpeta

P Damarell & J Pike, South Australia

### GOLD MEDALLION – BREEDERS ACHIEVEMENT AWARD

(for having bred 50 animals that have achieve the GSDCA 'Z' stamp.)

Vonpeta

P Damarell & J Pike, South Australia



### SILVER MEDALLION – BREEDERS ACHIEVEMENT AWARD

(for having bred 25 animals that have achieve the GSDCA 'A' stamp.)

Arkahla

Arkahla Kennels, South Australia

### SILVER MEDALLION – BREEDERS ACHIEVEMENT AWARD

(for having bred 25 animals that have achieve the GSDCA 'Z' stamp.)

Arkahla

Arkahla Kennels, South Australia

Kieserhund

Ms S Robertson, Queensland

Legionaire

Legionaire Kennels, Victoria

Natchez

Mrs P L Smith, South Australia



### BRONZE MEDALLION – BREEDERS ACHIEVEMENT AWARD

(for having bred 10 animals that have achieve the GSDCA 'A' stamp.)

Blakngold

Ms V Stocks, Victoria

Haveloc

Mrs G Hendricks, Queensland

Karastro

Mrs D Berghofer, Victoria

Teuschutzer

Mrs C & Mr C Cossu, New South Wales

Swartzlic

Mrs S Hargreaves, Victoria

Veeay

Mr S Sammut, New South Wales

Volscaro

Mrs T Roberts & Mrs L Pearson, Western Australia

Vonaachen

D & CA Gallacher, Western Australia

### BRONZE MEDALLION – BREEDERS ACHIEVEMENT AWARD

(for having bred 10 animals that have achieve the GSDCA 'Z' stamp.)

Blakngold

Ms V Stocks, Victoria



# ENDURANCE test

## Endurance Test – a walk in the park for a fit GSD!

*“The Endurance Test shall demonstrate the dog’s ability to work after being subject to a certain degree of physical strain without showing signs of undue stress or lack of constitution. Due to the dog’s physical structure, such a test can only consist of a dog travelling at a suitable pace for a performance of some lengthy duration, which, it is known places an increasing load not only on its internal organs, such as the heart and lungs, but on many other aspects of the dog’s physical structure and temperamental characteristics.*

*The effortless accomplishment of such a test shall be the evidence as to the physical fitness of the dog.”*

(extract from the ANKC ET rules)

The German Shepherd Dog is a working dog, we hear that all the time. They love exercise, running and playing. For those wanting to do a little extra fitness work with their dog, the Endurance Test is a fun and easy way to achieve a title and recognition of the dog’s stamina and willingness to work with its owner during that training effort. If you want to have some fun and can run or ride with your dog, this could be the test for you. So what’s it all about?

### What is an Endurance Test?

The Endurance test is a 20km run. But it’s split into 3 sections of 8km, 6km and 6km with 15 minute breaks between. Each running section is completed at 10km/hr pace, which is an easy jog pace and most GSD’s gait quite comfortably at this speed. And it’s an easy biking speed. The full test including the breaks takes two hours and 35 minutes.

The course is set up over three varying surfaces (ie. bitumen, gravel, dirt, grass etc) and competitors can run with their dog or ride a bike as the dog runs beside, on the left hand side. The dog must be on a loose lead and dogs and handlers ride or run in ‘indian file’ with dogs before and after them, so some training is required. The test is carried out in three sections. A short obedience exercise – a willingness test - is carried out. Then there is the first run leg over a distance of 8 kms. This is followed by a 15 minute break, which includes vet checks. The second stage is then a 6km run followed by a rest and vet check. The final leg is 6kms followed by a rest and vet check. The test finishes with another short obedience willingness test. If the dog remains sound and passes all tests and checks then they are awarded their Endurance Title.

### Who can participate?

Dog must be registered with the state Canine Control in order to qualify. This includes associate registered dogs.

The test is open to dogs aged between 2 and under 8 years but must not have reached the birth date of 8. The only other limitation is that bitches in season cannot compete – too distracting for all other dogs on the day !

All dogs competing in the Endurance test must have a veterinary check completed with their own vet within 14 days of the event. This is basically to ensure that your dog is considered fit and healthy to compete. The vet must check heart rate, temperature, muscle tone and condition of pads, along with any other health notes.

Endurance tests are held during the winter months, as the test must be held in temperatures below 24°C.





# ENDURANCE test

## What happens on the day?

Usually the test begins early in the morning, so be prepared for an early start ! When you arrive there is check-in and vetting, and you will have to provide your veterinary certificate, so don't forget it.

Before the trial commences, the vet (there is usually a team on the day) will check and record each dog's vital signs. This involves temperature, heart rate and paw pad condition, and will compare with what's on your vet certificate. Then its time to start.



The trial judge will put each handler and dog through a very simple obedience test. This is simply to see if the dog is willing and interested in working with you and can obey some basic commands. So a bit of basic heeling for 10-15 metres, and a recall on lead is all that's required. Once all that's done, you're ready to roll !



There is always a trial pace setter who rides at the front of the line of handlers and dogs. This person controls the pace that you run or ride at, and its done at 10km/hr (ie. 1km every 6 minutes). Any handler running is usually placed at the front of the line, and those riding bikes with their dogs follow on. The judge and usually several stewards also ride with you.



The first section is 8kms long, covering at least 3 varying road surfaces. At the completion of this, there is a break for 15 minutes. During this time the vets will recheck your dog by measuring temperature, heart rate and check their pads for wear and tear or injury. The dog's fitness and condition are continually monitored for their health and safety. Hopefully you and your dog are fit to continue.



The 2nd and 3rd sections are 6kms long. There is a 15 minute break after the 2nd section where the vet checks are done again. If the vets have any concerns about your dog's ability to complete the test, in consultation with the judge your dog will be withdrawn. However, if you've done the fitness work in preparation, most dogs do really well in the test. During the breaks, and even while riding along the course, you have a chance to chat with other competitors. You are competing for yourself and your dog, not against others, so the Endurance test is always an enjoyable and social event !

After the 3rd section there is a 20 minute break, where your dog is vet checked for the final time. If all is well and the vet passes as fit and healthy, you only have the final obedience willingness text to complete. This is a repeat of what was done at the beginning of the trial. As long as your dog continues to be ready to work with you as at the start of the day, you will pass with flying colours !





# ENDURANCE test

## Preparation and Training

Most people begin their preparation 2 – 3 months in advance. Most dogs will have to be trained to run alongside you as you run or ride your bike. And they should not pull or lag, just gait at a controlled pace. By gradually starting off with short frequent runs that can be extended slowly over time to longer runs, you will find your dog's fitness and stamina improves easily. This time is needed to build up you and your dog's fitness, as well as condition the dog's pads to the various surfaces so they do not get damaged and injured. This is really important. It's also important to have rest days in your training program. Fitness training varies for many people and dogs, but you do not need to cover long distances during training. Gradual increases in length work well and ideally in the month leading up to the test you will be able to do few 6 and 8km sessions with your dog (matching the stages of the test). Don't forget to try to do a few sessions with other dogs, as your dog will need to be familiar with other dogs running in front and behind during the test. And try not to train when it's too hot. It's not healthy for you or your dog!

If you are riding your bike during the test, have it serviced beforehand. The last thing you need is a broken chain or a wonky seat on the day! You will also need to wear a helmet, and some clubs will require (or supply) a high-vis vest depending on where the test is held.

It is also important for the dog to be comfortable with being examined - having their paws checked, standing still for heart rate and more particularly, having their temperature taken. If this is a concern, discuss with your vet about learning to take your dog's temperature to help get them use to the procedure.



On the day of the trial, don't forget water for you and your dog, bowl, a towel if it's wet, maybe a chair and some lollies etc for energy! Don't forget your bike, helmet, lead and collar either!

## Preparing Your Dog for an Endurance Trial:

### A note from the vet.

*To ensure you and your dog complete the endurance test, I have written some suggestions to help you succeed.*

*From my experience, the most common reasons dogs are withdrawn during the event are from over heating/ lack of fitness or pad issues. All dogs participating in the event need endurance training at and above the speed the event is run (10kph). Chasing balls, running around the backyard and long walks should not be considered adequate training!*

*Most of the course is on bitumen, which is abrasive and hard on pads, so much of the training should be done on bitumen to allow the pads to adapt. Always check your dog's pads after each training session to make sure they are OK. If the pads are not coping then continue training on softer surfaces before increasing time spent on bitumen.*

*Heavy breed & overweight dogs will find the test tough, so will need good preparation to complete it comfortably. Even though the event is run during the cooler months, the sun can be out and larger dogs may overheat, especially if they have not had adequate training. Artificial cooling is not permitted.*

*Those with small dogs should prepare for cold weather by bringing coats to keep the dogs (and yourself!) warm during the breaks, especially if it is raining and windy.*

*The article referenced below by Carole Bryant on preparing your dog is the best I could find on the internet. If you use it as a guide your dog should be able to complete the event (and then some more!) The only comment I would like to make is that in human endurance sports, the tapering period (the time one reduces the amount of training before the event) begins about 10 days prior to the event, whereas Carole suggests only a few days. I'll let you decide what's best for your dog! Please note that you check with your States Road Rules regarding attaching dogs directly to your bike as it may not be permitted.*

[http://www.berigorafarm.com.au/Preparing%20your%20dog%20for%20an%20Endurance%20Test\\_Rev080207.pdf](http://www.berigorafarm.com.au/Preparing%20your%20dog%20for%20an%20Endurance%20Test_Rev080207.pdf)

*Neil Thies*

Willunga Veterinary Services



# NEWS FROM OUR member clubs



## **ACT GSDA**

### **PRESIDENT**

**Mr. Wolf Meffert**

**Ph: (02) 6226-3959**

**Mobile: 0414 302 456**

**E-Mail wmeffert@bigpond.net.au**

### **SECRETARY**

**Ms. Veronica Fairbairn**

**Ph: (02) 6226-3959**

**E-Mail wmeffert@bigpond.net.au**

Canberra has been experiencing some very cold, wet and windy weather over the past few months. Whilst we acknowledge that the rain was desperately required we would have preferred if it did not rain on our Training nights, however our Members have proven to be very resilient and attendances despite the rain have been fantastic.

We have an active group who have been participating in Trials since the beginning of the year, generating positive comments from other competitors on how good it is to see GSDs competitively competing in the Trial ring again.

Leading the way has been Vic G, with Uhlmsdorf Taylor Swift CDX. Vic and Taylor are now competing in UD. At the Canberra Royal Trials, Kim Kleeman and Sunhaze Carter (Hugo) were first in CD. Jenny Kenworthy and \*CH Uhlmsdorf Blue Jeans AZ, (Cruze) titled CCD over the weekend and Michael Smith and Hunterbase Arko (Arko) managed two Novice Rally passes. Other Members Gillian Rutledge with Rhino and Rhonda Daley with Hillmagic Golden Snitch (Gryffin) have been competing in CCD and are almost 'there'!

Karen Hore has been very busy with her bitch Hillmagic Golden Calypso AZ, she titled in Rally Novice as well as gaining her Australian Champion Title.

Another recent Australian Champion is Uhlmsdorf Raindrops proudly owned by Ben Lowes and Uhlmsdorf Kennels.

\*Ch Uhlmsdorf Blue Jeans AZ CCD ET accompanied by Sam McGregor on the bike successfully competed in the Endurance Test in June.

The Club is participating in 'Pooch Affair' on July 30. This allows us to 'showcase' the German Shepherd Dog to the Canberra Public. Members and their dogs will be participating

in an obedience display, Breed feature, as well as being on hand to provide information and 'hands-on' experiences with their dogs.

An interesting activity is the recent introduction of 'Nose Works' by Raelene Koerber. The course known as 'The Nose Knows' is a weekly course designed for dogs to use their noses. Raelene has trained dogs for several overseas Governments and has been a trainers/ handler for Australian Quarantine. Five members of the Club and their dogs having completed the base level are now participating in the next level. They meet once a week at the clubhouse and 'sniff' out the various objects and scents. All are enjoying this experience and it is certainly providing an opportunity for the dogs and handlers to learn a different aspect of what our dogs are capable of doing.

We are really looking forward to our October Shows, (1&2) tempered with an Italian flavour, our two Judges being Senior Stefano Beggato and Lou Donald. This will be Stefano's first visit to Australia; he is a highly credentialed Judge. Both will judge dogs and bitches, stock and long stock coats, over the two days. Entries close on September 16, the schedule is on the Club's website. Call Margaret Barnes 0262232217 if you have any inquiries with regards the show.



## **GSD LEAGUE**

### **PRESIDENT**

**Mr. Greg Jones**

**Ph: (02) 4753-6073**

**Mobile: 0418 399 047**

**E-Mail nicq01@bigpond.net.au**

### **SECRETARY**

**Mrs. Fay Stokes**

**Ph: (02) 4777-4241**

**Mobile: 0401 019 213**

**E-Mail faystokes1@bigpond.com**

"Winter", who needs it. All things big and small seem to shut down and it's the same with clubs and training nights. It is either too cold or it's raining, but when you are a branch Manager or branch worker you still have to turn up as we have the stalwarts who front up rain hail or shine. At the Erskine Park branch we have our Obedience training on Tuesday nights and on Thursday nights we have show training. Regardless of the weather they turn up in the rain and come into the clubhouse

to have coffee, tea and nibbles and of course they like to have a yak. All sorts of subjects are covered, all good for people to exchange views.

The league has been active in promoting the Shepherd with two events attended by the Club. One at the Camden Paws in the Park and then the Dogs NSW major promotional day at the showgrounds on the top grounds above our clubhouse which was, as with Camden event, received very well by the public and a big thank you to the group that came to help man the stands. It is good to have people that rally to the call for help at these events.

At the present time we are looking at and preparing for Dogs on Show after just having the Breed Commission meeting in Sydney for three days, so it is all go at the moment.

We are over the National now and everyone seems back to normal, must be the medication! Once again a big thank you to the people that worked so hard to make the show the success that it was and what about the Trophy Table - something to behold.

We have had two events since last report - our June show with Salvatore Pittelli from South Australia who was received well by our exhibitors and our State Breed Evaluation with Fay Stokes and Karen Hedberg. The weather was kind to us for both these events which brings us to our next show in October which will be dedicated to the late Laurelle Reilly so look out for that show.

We have had a sad year losing five of our long standing members, being Laurelle Reilly, Helen Galbraith, Lorraine Spalding, Elvina Brodie and just recently the passing of Stephen Choy. The German Shepherd Dog League passes on their deepest condolences to the families and friends of these valued members.

Till next time,

*Terry Jarvis*

Publicity Officer



# NEWS FROM OUR member clubs



## NEWCASTLE & HUNTER REGION GSDC

### PRESIDENT

Mr. Sean Lynch

Mobile: 0467 798 973

E-Mail [slynch@newcastlehino.com.au](mailto:slynch@newcastlehino.com.au)

### SECRETARY

Mrs. Leeanne Lynch

Mobile: 0417 414 285

E-Mail [leeannelynch@hotmail.com](mailto:leeannelynch@hotmail.com)

The Newcastle club has continued to move forward and its members have continued to do well in the show ring. Firstly I must apologise to Paul Daphne and Jamie Murray that I missed including their massive effort in winning the breeders group at this year's national, they backed it up winning again at the NSW State Breed Show. The state breed was another successful event for our members with Paul York and his team taking out LSC Sieger with Babanga Mr Anderson. Congratulations to all our members who featured highly in the winner's circle.

At the time of writing our club has a couple of big events coming up. Firstly we have a public information day where we will feature the breed and the club and then we will have our championship show and members competition. These shows will be judged by Mel Groth and Robyn Knuckey and we look forward to having these ladies back in Newcastle.

The club also recently had our annual Riverwood Downs weekend which was enjoyed by the members and their dogs. This weekend has a backpack walk and then lots of games and fun. It's truly a wonderful weekend to enjoy the dogs.

We have gone to online entries and I would like to thank Peter Asquith for his help with this. Peter is our PR man and he is doing a great job promoting the club and the breed, he is very enthusiastic.

As the weather starts to warm and winter is over we look forward to seeing more members out training their dogs. We have some new puppies around and we look forward to seeing them move through the obedience classes and commencing in the show ring. Until next time, remember to enjoy your dogs.....



## GSDC of QUEENSLAND

### PRESIDENT

Ms. Sharon Ballantyne

Mobile: 0408 702 766

E-Mail [president@gsdcqld.org.au](mailto:president@gsdcqld.org.au)

### SECRETARY

Mrs. Diane Ballantyne

Mobile: 0411 433 739

E-Mail [secretary@gsdcqld.org.au](mailto:secretary@gsdcqld.org.au)

Busy times here in sunny Queensland since our last report. Zone 2 enjoyed the Sarina Kennel Club's Championship Show weekend on the 21st May which of course included the opportunity to not only exhibit under a Specialty Judge, Sharon Ballantyne in their local area but to also receive GSDCA Gradings, medals, beautiful trophies and sashes. Some lovely animals were presented and a successful, informative and fun day was enjoyed by all. Congratulations to the placegetters and winners (results and critiques available on the GSDCQ website). Challenge Dog: \*Ch. Astasia Voight AZ, Reserve Challenge Dog: Kyoara Georgio (Al), Challenge Bitch: Briska Kaizen a ED (Imp Gmy), Reserve Challenge Bitch: Albata Izabella AZ, Best Stock Coat: Briska Kaizen a ED (Imp Gmy), Long Stock Coats Challenge Dog: \*Ch. Denargun Uncle Fester AZ, Challenge Bitch: \*Ch. Jaykri Pearl AZ, Reserve Challenge Bitch: Terunik Awesome I Am Best, Long Stock Coat: \*Ch. Denargun Uncle Fester AZ. No rest for Zone 2 just yet with the weekend of August 13th & 14th in Rockhampton full to the brim! Saturday starting off with an Open Show, Judge Mrs. Gay McNeill, to be followed by a Breed Survey. Slight change to details included in the last Review notes as Russell Wenham unfortunately is not able to attend. We thank Mrs. Fay Stokes for stepping in and accepting the judging appointment. Surveyors in attendance: - Mrs. Fay Stokes and Mrs. Carol O'Rourke. Fay will also be the judge for the GSDCQ Zone 2 Members Competition to be held on Sunday 14th August being held at 'The Caves' Showgrounds.

Closer to Brisbane it has also been full of fun times. On Saturday June 25th a Breed Survey was conducted, congratulations to those who participated and successfully gained their Breed Survey classifications (details on GSDCQ website). This was followed by our

2016 Members Competition judged by Mrs. Melanie Groth (NSW). Best Stock Coat Dog was \*Ch. Indio di Casa Nobili IPO1 HIT a ED H-neg (Imp. Italy) and Best Stock Coat Bitch was Ch. Castastar Alexi ET PT AZ. In the Long Stock Coat classes, the Best Dog going to \*Ch. Shernaa Pakros HT a ED H-Neg (Imp UK) and Best LSC Bitch was the lovely Astasia Vitarni AZ (results and critiques available on the GSDCQ website). The weather was perfect, as we do try to arrange, the atmosphere alive, happy, relaxed – overall, it was a fantastic day from beginning to end with smiles all round.

This was quickly followed a mere two weeks later with our Double Header Championship show weekend and as it has been described 'held under picture perfect skies' (told you perfect weather for shows is our thing). Saturday July 9th saw Judge Mr. Louis Donald present Best in Show to the German VA dog \*Labo vom Schollweier aED and Runner up to Best in Show to \*Ch. Indio di Casa Nobili HIT HD-ED (Imp Italy). Sunday July 10th Judge Mr. Vince Tantaró presented Best in Show to the consistent \*Ch. Jayshell Winona AZ and Runner Up to Best in Show to \*Sup. Ch. Avahlee Girls Keep Secrets AZ (results and critiques available on the GSDCQ website). This is a timely opportunity to extend congratulations to Judith and Irene Hayton on their girl 'Kinta' (Avahlee Girls Keep Secrets) becoming the first Long Stock Coat in Australia to gain the title of Supreme Champion! Well done girls!

The Restricted Trial Judge Mr. Bill Patterson on the Saturday attracted a good entry, well up on last year and the obedience committee members and helpers as always did a sensational job on the day. Results were UDX. 1ST. O.C Kayrossi Orion, UTILITY 1ST. Trangold Dare to be Different OPEN 1ST. Ch. Dewisri Quartz CD, NOVICE 1st Astasia Usha, CCD 1st Ch. Kingland Yutu Yazman HIT ET TD RN. Some great work on the day – congratulations to all.

Feel the need to mention how wonderful all of the recent events have been, not only the exquisite weather we consistently arrange for you all (tongue in cheek) but the atmosphere, the sportsmanship, the happy faces, the overall general feedback we are getting is so refreshing so let's keep it going.

Anyhow, no rest for the wicked as they say, next up is the 2016 State Breed Exhibition and Restricted Trial to be held on September 11th. Judge Mr Russell Wenham (looks like our get well wishes worked). It's wonderful to hear that he is on the mend and able to take on local appointments again. The Trial Judge is a great friend of the breed Mrs. Laura Schminke. This is a weekend we are all looking forward to and hoping for a super entry in both areas.

*Leeanne*

# NEWS FROM OUR member clubs

At the completion of the State Breed Exhibition, it will be all hands on deck as we knuckle down and head towards the 45th National German Shepherd Dog Show & Trial to be held in Brisbane on 19, 20 & 21 May 2017. Planning and preparation of course began a long time ago, including fundraising events. A good time to send our ongoing gratitude to those who turn up every time and man these events. We couldn't do it without you! We are now less than 10 months away, YES, it is that close! Our small but dedicated team, with the assistance of National Council, will be working even harder as we strive to reach the point of putting the finishing touches to and fine tune the details of this very exciting event. It is promising to be a sensational National, perfect weather of course, highly respected Judges: - Herr Frank Goldlust (Dogs & LSC) and Herr Joachim Stiegler (Bitches). Obedience Judges are Mr. Bill Patterson, Mrs. Barbara Murfet and Mrs. Coral Pethers. Junior Showmanship is being judged by the bubbly and popular Jess Kada from NSW.

Exhibitors from all over Australia are already confirming attendance and offers of assistance, gratefully accepted we might add. Pledges of sponsorship and donations also coming from members far and wide across this great country of ours. All this support is wonderful and the National Committee team here in Queensland are determined that the 2017 National will be a well-run event with emphasis on the social side of the weekend. If you haven't already booked your accommodation, get a wiggle on! List of 'dog friendly' accommodation is on our website under the 2017 National heading. Lots of campsites and areas for motorhomes are also available on the grounds. Don't forget to 'like' the 45th National Facebook page for updates and news.

On that note will sign off for this edition – don't delay, start making plans for your trip to 'beautiful one day, perfect the next' sunny Brisbane in May 2017 to be part of the 45th GSD National Show & Trial. In the meantime, continue to enjoy this wonderful breed of ours and remember it is they who brought us all together in the first place. One common love – the German Shepherd Dog.



## **GSDC of VICTORIA**

### **PRESIDENT**

**Mr. Vince Ebejer**

**Ph : (03) 9467-8653**

**Mobile: 0411 462 358**

**E-Mail [president@gsdcv.org.au](mailto:president@gsdcv.org.au)**

### **SECRETARY**

**Mrs. Melissa Siktars**

**Ph : (03) 9800 0999**

**Mobile: 0438 554 776**

**E-Mail [secretary@gsdcv.org.au](mailto:secretary@gsdcv.org.au)**

Winter in Victoria is never enjoyable for humans, but is perfect for many dog activities! Its prime time for our tracking teams – they seem to love the cold. Our trial in June at Ballarat had 70+ entries, along with cold, frost and fog – but many passes. Those who've graduated to Track and Search have also been active getting passes and will culminate in our TSD trial in October. July also saw our open Rally trial with over 60 entries, good to see so many giving Rally a go recently. There's been heaps of passes and titles achieved, great for our obedience fraternity. Our open Endurance Trial saw 5 passes for Club members. It's a popular trial held in a great setting. Great to see two very fit show dogs pass, along with a couple of all-rounders who just enjoy getting out and running. Cathy Workman impressed all as she ran the whole 20km with her boy Ricky (Jayshell Ghan). Not bad at all. Marie Felsovary also added ET to her girls Rally, Tracking and Herding titles to become Ramara Justa Biache RA TD HSAs ET. Well done to an active owner and dog.

We held a structural assessment in June at Northern branch. 23 dogs and handlers took part in a very successful day. A few of the dogs will now go forward to Breed Survey too! Thanks to our surveyors Jenny, Ian, Alastair and Fran along with Andrew Jones who did the assessing. A very interesting day for members who don't normally get involved in showing or survey. Gippsland will host our next assessment in October.

Our Aspiring Instructor program is again underway for 2016, with new obedience and show instructors in training. To date they've covered the breed and conformation, puppies and socialisation, taking class and the role of the instructor. Much more to go yet, but a great start to their new careers in our club.

Our show fraternity showed their mettle at the State Breed in May, when the weather was not so complimentary on the Sunday – but the dogs performed to their utmost. It was great to have 3 Excellent Merit SC bitches in Jayshell Winona, Schaeferhund Nelke and Schaeferhund Balleena. Winnie, Nelke and Bella sure did look the part. Our Excellent Merit dog was Sensen Mann Yokon. Volschain Akira took out the Dual Performance – Caro and Kira are a hard team to beat! Our showies are now gearing up for a run into shows, with two new shows in August. We've teamed up with Lilydale Kennel Club and added a new GSD Exhibition ourselves. Natalie Humphries is winging her way to Victoria to judge, along with our own Andrew Jones. In November after the WDC weekend, we're teaming up with Yea Kennel Club for another specialist event. So it's go go go!

Around the branches winter brings the usual social activities. Skye branch had a big trivia night, where apparently the 'Earwigs' again triumphed. Western also had a trivia night, and coming up is a night with the Police Dog Squad. Eastern have held a vet talk on behavioural issues and are already planning for their Christmas shopping tour. There's so much more to dog club than dogs!

We were saddened by the recent passing of Graeme Jacobs, a respected Life Member of our club. Graeme was a past Club Treasurer and heavily involved with our Eastern training branch in various roles, from Branch Manager to Groundsman. He was a generous and helpful club member who contributed greatly to the GSDCV. Our thoughts are with Barbara, her family and Graeme's many friends.

On a happy final note, a big shout out to 'Hudson' (Jayshell Crockett) who recently became a lifesaver! A sick dog needed blood urgently, and the vet had exhausted all the usual avenues. So he called on a local client. Jenny took Hudson in and not too long later his donated blood was saving a very ill dog's life. A happy ending for both. Hudson's size and great temperament meant he was perfect for the emergency situation. Just goes to show again what a versatile breed we have!

*My Shepherd, My Friend, My Responsibility*



# NEWS FROM OUR member clubs



## **GSDA of WESTERN AUSTRALIA**

### **PRESIDENT**

Mr. Ian Marr

Ph: (08) 9305-2193

Mobile: 0435 751 346

E-Mail [president@gsdawa.org](mailto:president@gsdawa.org)

### **SECRETARY**

Ms. Anna Mitchell

Mobile: 0412 420 711

E-Mail [secretary@gsdawa.org](mailto:secretary@gsdawa.org)

W.A. is well and truly in the grips of winter – it seems our East Coast friends are having some great sunny days. I do not do well in the cold folks. We have been quite busy over here though, most notable is the nominations for the 2016/2017 year. EXTREMELY pleased to announce that the committee was elected unopposed cementing the belief that people are happy with the organisation and the direction it is travelling in. Only one change and that is our brilliant treasurer Eric Herson who is retiring but will be replaced by Joan McMulkin who has attended meetings this year to get up to speed. Eric will be missed and now he is sitting in the gallery no doubt he will be voting No to everything LOL. Seriously we thank Eric for his dedication and expertise in this role, he has turned our finances around and set us on a much better path.

Deepest sympathies to those who have lost loved ones recently – both human and canine – may time help to heal the hurt you all feel at this sad time.

Recently we have had some successful shows with Andrew Jones and Bruce Knight judging our two Members' Competitions and also an Open Show judged by a trainee judge Ambre Smith. All seemed to go off very well, the dogs looked great and the weather was kind. This past weekend saw our Obedience trial. We are ever grateful to the show and trials teams who are dedicated groups who put these events together.

The Breed Survey evaluation was held to give people a chance to have their say on the way surveys are perceived and offering suggestions to make the system better.

Our last Quarterly General Meeting was exceptionally well attended and sought to change our general meetings to follow training on a Sunday to encourage more people to attend. The Barbeque will be lit and hopefully people will stay to see how we work. Our A.G.M. will be the first "trial" on August 7th.

Looking forward to our next round of shows – the Rick Richardson and Walter Martin Memorial Championship shows to be held in August and adjudicated by Honey Gross-Richardson (W.A.) and Greg Green (Victoria).

In September we have our E.T. incorporated into our specialty trophies – the V.I.M.S. and Montemelia Cups and of course another Character and Working Assessment.

No rest for the wicked eh? Until next time signing off from all in the West.

*Margaret Adams*

Editor G.S.D. News



## **GSDC of NORTHERN TERRITORY**

### **PRESIDENT**

Mrs. Margaret Adams

Ph: (08) 8988-6956

Mobile: 0418 899 713

Email [marg@goodgolly.com.au](mailto:marg@goodgolly.com.au)

### **SECRETARY**

Mrs. Margaret Francis

Email: [margfrancis@bigpond.com](mailto:margfrancis@bigpond.com)



## **GSDC of SOUTH AUSTRALIA**

### **PRESIDENT**

Mr. John DeLucia

Ph: (08) 8522-1692

Mobile: 0417 811 787

E-Mail [jjdelucia@bigpond.com](mailto:jjdelucia@bigpond.com)

### **SECRETARY**

Mr. Stephen Collins

Ph: (08) 8556-2340

Mobile: 0419 212 749

E-Mail [secretary@gsdcsa.org.au](mailto:secretary@gsdcsa.org.au)



## **GSDC of TASMANIA**

### **PRESIDENT**

Mr. Dave Griffin

Ph: (03) 6261-4237

Mobile: 0449 719 885

E-Mail [dgriffin1@internode.on.net](mailto:dgriffin1@internode.on.net)

### **SECRETARY**

Mrs Gabrielle Peacock

Mobile: 0409 977 136

E-Mail [gabriellepeacock@outlook.com](mailto:gabriellepeacock@outlook.com)

## Vale Helen Galbraith



Helen and I had been close friends for an amazing length of time, I believe some 4 decades. We obviously got to know each other very well within that length of time. So the shock of her illness and subsequent rapid passing, has left a huge gap. And as I speak today I am still uncomfortable and disbelieving that I speak of Helen Galbraith

in the past tense. It was only days earlier to the awful diagnosis that we both shared some coffee together.

Over the many years, we quite possibly rang each other almost daily and curiously sharing many topics of communal interest. These conversations frequently ventured into much laughter, but also, the sharing of the many ups and downs of life. In the downs of life I was privileged to always be there for her.

Helen was highly intelligent and always portrayed herself as a person of much dignity. She often spoke of the empathetic issue of 'fairness' as a quality which I believe she adopted for her vision of life and subsequently modelling her own character of this value as her moral compass. So I can readily say that the issue of fairness was a driving force and became part of her personality. As such, this was a quality we both shared; further reinforcing the bond we created within that friendship. And, as I am writing I am reminded of our phone conversations and much that we used to giggle about.

Our friendship developed as a result of Helen purchasing from me a German Shepherd puppy whom she named Dino. It was not long before Dino became a very successful show/breeding dog for her, entering Helen into the prominence of the German Shepherd Dog fraternity. She loved her dogs and any dog sharing a life with her and Barry could not wish or could we imagine a better life. Every dog was special all on an even keel. Every dog was given the opportunity to develop his or her personality with play and love. This undoubtedly rewarded each dog to be a genuine family member of Helen and Barry's home.

As the years rolled by our friendship developed beyond our initial conversations of show dogs and the show ring. We often shared our life experiences and were both very politically aware particularly of federal politics. The political discussions were never heated as we were on the same page politically as well, and in fact these political discussions often ended up with much laughter.

Being both interested in the creative aspect of life yet somewhat surprisingly it was only recently that I became aware of Helen's creative skills in poetry writing. Her poems were inspiring and I encouraged her to write more and more and consider publication. Helen was too humble and chose not to acknowledge their value to such a degree. They were impressive and I am honoured to have some copies which

she adamantly swore me to secrecy not to give or read to any other person other than my husband Tony, who was Helen's GP. And of course, I will honour this promise until I am released from the promise.

I should not have been surprised with her poetry writing, as we already knew that Helen excelled in writing from her comprehensive contribution to the condensed history in the German Shepherd Golden Jubilee book being the history of the 50th year birthday celebration of the German Shepherd Dog Council of Australia. Taking on this mammoth task Helen showed her skill as an historian recording with scrupulous accuracy the acquired data and compiling a very readable accompanying text. One can comfortably recognise the text written for historical accuracy.

But her creative skills did not end there. Helen and her husband Barry along with other band members formed a band called the Bushrangers Bush Band. Helen sang, played at least 7 different instruments and mostly self taught!! Quite extraordinary. She played the mandolin, guitar, ukulele, tin whistles, Irish flute, recorder and Appalachian dulcimer. The music we were listening to on our arrival was the Bushrangers Band. So we can yet again see an amazing person Helen proved out to be. Knowing her as I did I again reflect on the loss of Helen. She had made a contribution in so many different areas and succeeded in many facets of her endeavours. And being a perfectionist by nature, what she attempted were never half measures. It always had to be her very best and this reflected much in her legacy.

Now she rests in peace. God bless her.

*Malle Marley*

Karlach

***The GSDCA Executive and Member Clubs extend our condolences to Helen's husband Barry and family on their loss. Helen's significant contribution to the GSDCA Golden Jubilee Edition provided a lasting legacy for our members. She will be missed and fondly remembered.***





# Cinderhof & Stobar

*are proud to announce*

UK Champion 'a' normal ED Normal (Gmy)

## \*CONBHAIREAN

## FREDDIE



*Coming  
Soon!*



V4 BSZS Conbhairean Uno x VA1 UK Conbhairean Quella

SG22 BSZS - Herr Teubert SV  
V1 UK National 2015 - Herr Stiegler SV  
Young Sieger UK - Herr Schwiekert SV  
UK National Best Puppy In Show Karl Otto Ojala SV  
Puppy Sieger UK - Herr Brausch SV

Top winning UK GSD 2015  
'a' normal ED Normal (Gmy)  
DNA Proven  
IP02 Kkl Lbz



# PROGENY

UK Ch \*Conbhairean Freddie 'a' normal ED Normal (Gmy) IP02



'Cinderhof'

[www.cinderhof.com](http://www.cinderhof.com)

Leeanne Lynch and Jo Cathie

0417 414 285 / 0423 700 293

'Stobar'

Brank and Chris Auwema

0418273883



## The German Shepherd Dog Club Of Queensland (Inc.)

***The German Shepherd Dog Club of Queensland was formed on the 25th September 1957 and the first meeting was held at the Carlton Hotel, Queen Street, Brisbane and records show this was attended by twenty-one breed enthusiasts whose aim was to re-form The German Shepherd Dog Club of Queensland after it was disbanded during World War II. This year we celebrate the 59th anniversary of the founding of the club and while much has changed during that time many things remain the same. Currently the club has almost 300 members including founding members Phyllis and Harold Ireland who still attend shows and maintain a strong interest in the breed.***



Founding members Phyllis and Harold Ireland



Our team of Breed Surveyors are Louis Donald, Russell Wenham and Barry & Carol O'Rourke. We also have several GSDCA Specialist Judges residing in Queensland including Pieter Tjerkstra, Rod Vernon and GSDCA trainee Judge Sharon Ballantyne. The club also acknowledges ex-Queenslander Melanie Groth (GSDCA Specialist Judge/Breed Surveyor) who while living in NSW is still fondly claimed one of ours. Melanie recently judged our 2016 Members Competition at Logan Obedience Club grounds. In the Obedience arena we have highly qualified Obedience judges on the GSDCA panel including Warren Doyle, Val Bonney, Tabitha Young and Catherine O'Shea plus several others termed 'friends of the breed'. The Club holds two Championship Shows each July, the State Breed Exhibition in September and one Open Show now in September. We also have a strong relationship with the Working Dog Club of Queensland and conduct a joint venture each year in May where we have a GSDCA Specialist Judge.

Members of the club come from all areas of this vast State and enjoy many aspects of the breed including showing, obedience, herding, tracking, endurance and training their dogs to compete in all disciplines



Carol O'Rourke



Barry O'Rourke



Russell Wenham



Louis Donald

including IPO. We also have many members who just love their dogs as family companions and who continue to enjoy being part of the organisation. Most live on the east coast between Tweed Heads and Cairns. The State is split into Zones 1, 2 and 3 with Zone 1 extending between the Qld border north to Gympie, Zone 2 from north of Gympie to Mackay and Zone 3 from just north of Mackay to Cape York and west to Mt. Isa. Zone 2 Club Representative is Irene Fitzgerald and Zone 3 Representative is Bronwyn Hurley. This year Zone 2 has had a very busy year with more events planned in August at 'The Caves' showgrounds (near Rockhampton). They are holding a club Open Show and Breed Survey on the 13th August with Gay McNeill judging the Open show and Fay Stokes and Carol O'Rourke doing the Breed Survey. The following day sees Fay Stokes judging a Members Competition where GSDCA Gradings will be awarded. The folk in Zone 2 are very pro-active and supported by a strong team. Irene Fitzgerald continues to promote the ideals of the club and encourages everyone to participate in the GSDCA Breed improvement schemes. Bronwyn Hurley in Zone 3 lives in Mt. Isa but also travels to all breeds shows and attends southern shows as often as she can. There are also some new members in the Cairns area starting to make their presence felt in the club. The Management Committee acknowledges that their support and commitment is a valued part of the club. The Club also has 17 life members, many of whom are still very active in the breed and form part of the Management Committee.

As a very small club in comparison to most of our southern sister clubs we struggle with the distances involved and trying to keep members involved and up to date with what's happening at club level. The current Management Committee is made up of the following members:

Sharon Ballantyne (President), Bob Reidy (Vice President), Shelley McCammon (Treasurer), Diane Ballantyne (Secretary) and Committee members - Ann Clarkson, Mandy Scrivens, Michelle Hammond, Sue Bruno and Sarah Gordon.

Entries at the Obedience trials vary however this year at our July trial we got 18 entries which is better than previous years. In order to try to maintain contact the club has a website and a Facebook page and these are good communication tools to assist everyone to keep in touch and provide information and updates. The club has a bi-monthly magazine 'Fidelity' and a newsletter is emailed to members as often as time allows.

Unlike most other sister clubs Queensland does not conduct regular obedience classes at a club level and despite many, many attempts to get this up and running the numbers of members able to take classes and willing to come along indicate that this is unlikely to happen at least in the short to medium term. Having said that, members do attend obedience classes with several serving on the management committees of 'All Breeds' obedience clubs, therefore providing opportunities to train and prepare their dogs for trials. Other members conduct private obedience classes at various venues throughout the State. In the regional areas obedience and tracking is a favourite and the club encourages



Lou Donald and President Sharon Ballantyne



# CLUB spotlight

these members and their dogs as much as possible. Herding is popular among members particularly in the south-east corner of the State and every year at the Annual General Meeting we acknowledge test results and passes in this aspect of the breed. The end of year awards also showcase the obedience titles gained by member's dogs. The club conducts show training classes each Wednesday night at the Durack Sports grounds and while the numbers attending is small they are a dedicated bunch whose results at interstate shows clearly show that Queensland bred dogs and bitches are more than capable of mixing it with the best from around the country.

The Queensland club like other clubs is struggling with low entries at shows, diminishing numbers of dogs being bred and exhibited and an aging membership. However now and again we see a young handler shine amongst all the others and this is a timely opportunity to mention Megan King, whose enthusiasm and infectious personality is refreshing. We can only hope that she continues to receive support from all around her as the club most certainly could do with a dozen more Megan Kings.

Now to the future and in 2017 Queensland is hosting the "45th GSDCA National German Shepherd Dog Show and Trial" at Dogs Queensland Sports Grounds, King Avenue, Durack on the 19th, 20th & 21st May. Judges for this event are Herr Frank Goldlust and Herr Joachim Stiegler from Germany. These two gentlemen have judged in Australia many times and are highly respected within the fraternity both here and in Germany. We are hopeful that these great judges will get a fantastic entry. Equally respected Judges Mr. Bill Patterson, Mrs. Barbara Murfet and Mrs. Coral Pethers are sure to attract good entries in the obedience rings. Junior Showmanship will be judged by the up-n-coming Jess Kada (NSW). Jess is a trainee judge and a handler herself. She will bring another fresh face to the National panel.



Frank Goldlust



Herr Steigler

A small but determined National Show Committee has been formed and is slowly and carefully working through the myriad of tasks that need to be completed to run a successful event such as this. Members and in particular country members of the club are excited at the prospect of attending this prestigious weekend with many pledging support both financially and personally. Sister clubs and interstate members have already stepped up with offers of help and shortly many of you will be contacted personally and asked to contribute towards the beautiful trophy table planned for the event. The theme for the 45th National will be 'FUN' and more 'FUN' with emphasis on everyone having a great social weekend with friends and enjoying each other's successes. The grounds at Durack are sensational with sites available to camp and/or bring your motorhome or campervan, bookings through 'Show Manager'. There is also plenty of hotel/motel accommodation available so check out the website [www.gsdclld.org.au](http://www.gsdclld.org.au) for more information. For those who missed out on a corporate tent, don't stress as the Durack grounds has lots of huge umbrellas at ringside right up close to the action. Social events for the weekend include the President's Dinner on the Friday night. This event sometimes gets mixed reviews, however 2017 will see a change of fortunes for this important part of the weekend as the club takes over the courtyard of the Calamvale

Hotel where folk can enjoy an extensive ah la carte menu in a casual setting – no need to 'frock up'. Saturday night will see a casual night at the grounds with great food, entertainment and the bar will be open and in full 'party mood'. A full schedule will be printed in the December Review. Remember to check out the GSDCQ National Facebook page for updates.

*Queensland - 'beautiful one day - perfect the next'*



Megan King & friend



Nicole Hammond



Jo Morgan GSDCA Service Award recipient for achieving a perfect score of 200 in Obedience with "Jem" (Mondioucu's Astare Noir Jem (Imp USA))



GSDCQ - proud supporter of GSD's In Need - photo taken November 2015 at the Honour & Privilege Walk at Durack. Over 300 GSD's were there



## Early Neurological Stimulation

[www.breedingbetterdogs.com/article/early-neurological-stimulation](http://www.breedingbetterdogs.com/article/early-neurological-stimulation)

**Dr. Carmen Battaglia**

***Surprising as it may seem, it isn't capacity that explains the differences that exist between individuals because most seem to have far more capacity than they will ever use. The differences that exist between individuals seem to be related to something else. The ones who achieve and outperform others seem to have within themselves the ability to use hidden resources. In other words, it's what they are able to do with what they have that makes the difference.***

In many animal breeding programs, the entire process of selection and management is founded on the belief that performance is inherited. Attempts to analyze the genetics of performance in a systematic way have involved some distinguished names such as Charles Darwin and Francis Galton. But it has only been in recent decades that good estimates of heritability of performance have been based on adequate data. Cunningham, (1991) in his study of horses, found that only by using Timeform data, and measuring groups of half brothers and half sisters could good estimates of performance be determined. His data shows that performance for speed is about 35% heritable. In other words, only about 35% of all the variation that is observed in track performance is controlled by heritable factors, the remaining 65% is attributable to other influences, such as training, management and nutrition. Cunningham's work while limited to horses, provides a good basis for understanding how much breeders can attribute to the genetics and the pedigrees.

Researchers have studied these phenomena and have looked for new ways to stimulate individuals in order to improve their natural abilities. Some of the methods discovered have produced life long lasting effects. Today many of the differences between individuals can now be explained by the use of early stimulation methods.

### Introduction

Man for centuries has tried various methods to improve performance. Some of the methods have stood the test of time, others have not. Those who first conducted research on this topic believed that the period of early age was a most important time for stimulation because of its rapid growth and development. Today, we know that early life is a time when the physical immaturity of an organism is susceptible and responsive to a restricted but important class of stimuli. Because of its importance many studies have focused their efforts on the first few months of life.

Newborn pups are uniquely different from adults in several respects. When born, their eyes are closed and their digestive system has a limited capacity requiring periodic stimulation by their dam who routinely licks them in order to promote digestion. At this age they are only able to smell, suck, and crawl. Body temperature is maintained by snuggling close to their mother or by crawling into piles with other littermates. During these first few weeks of immobility, researchers noted that these immature and under-developed canines are sensitive to a restricted class of stimuli which includes thermal and tactile stimulation, motion and locomotion.

Other mammals such as mice and rats are also born with limitations, and they also have been found to demonstrate a similar sensitivity to the effects of early stimulation. Studies show that removing them from their nest for three minutes each day during the first five to ten days of life causes body temperatures to fall below normal. This mild form of stress is sufficient to stimulate hormonal, adrenal and pituitary systems. When tested later as adults, these same animals were better able to withstand stress than littermates who were not exposed to the same early stress exercises. As adults, they responded to stress in "a graded" fashion, while their non-stressed littermates responded in an "all or nothing way."

Data involving laboratory mice and rats also shows that stress in small amounts can produce adults who respond maximally. On the other hand, the results gathered from non-stressed littermate show that they become easily exhausted and are near death if exposed to intense prolonged stress. When tied down so they were unable to move for twenty-four hours, rats developed severe stomach ulcers, but littermates exposed to early stress handling were found to be more resistant to stress tests and did not show evidence of ulcers. A secondary affect was also noticed.

Sexual maturity was attained sooner in the littermates given early stress exercises. When tested for differences in health and disease, the stressed animals were found to be more resistant to certain forms of cancer and infectious diseases and could withstand terminal starvation and exposure to cold for longer periods than their non-stressed littermates.

Other studies involving early stimulation exercises have been successfully performed on both cats and dogs. In these studies, the Electrical Encephalogram (EEG) was found to be ideal for measuring the electrical activity in the brain because of its extreme sensitivity to changes in excitement, emotional stress, muscle tension, changes in oxygen and breathing. EEG measures show that pups and kittens when given early stimulation exercises mature at faster rates and perform better in certain problem solving tests than non-stimulated mates.

In the higher level animals the effect of early stimulation exercises have also been studied. The use of surrogate mothers and familiar objects were tested by both of the Kelloggs and Dr. Yearkes using young chimpanzees. Their pioneer research shows that the more primates were deprived of stimulation and interaction during early development, the less able they were to cope, adjust and later adapt to situations as adults.

While experiments have not yet produced specific information about the optimal amounts of stress needed to make young animals psychologically or physiologically superior, researchers agree that stress has value. What also is known is that a certain amount of stress for one may be too intense for another, and that too much stress can retard development. The results show that early stimulation exercises can have positive results but must be used with caution. In other words, too much stress can cause pathological adversities rather than physical or psychological superiority.

## Methods of Stimulation

The U.S. Military in their canine program developed a method that still serves as a guide to what works. In an effort to improve the performance of dogs used for military purposes, a program called "Bio Sensor" was developed. Later, it became known to the public as the "Super Dog" Program. Based on years of research, the military learned that early neurological stimulation exercises could have important and lasting effects. Their studies confirmed that there are specific time periods early in life when neurological stimulation has optimum results. The first period involves a window of time that begins at the third day of life and lasts until the sixteenth day. It is believed that because this interval of time is a period of rapid neurological growth and development, and therefore is of great importance to the individual.

The "Bio Sensor" program was also concerned with early neurological stimulation in order to give the dog a superior advantage. Its development utilized six exercises which were designed to stimulate the neurological system. Each workout involved handling puppies once each day. The workouts required handling them one at a time while performing a series of five exercises. Listed in order of preference, the handler starts with one pup and stimulates it using each of the five exercises. The handler completes the series from beginning to end before starting with the next pup. The handling of each pup once per day involves the following exercises:

1. Tactical stimulation (between toes)
2. Head held erect
3. Head pointed down
4. Supine position
5. Thermal stimulation

## Tactile stimulation

1. **Tactile stimulation** - holding the pup in one hand, the handler gently stimulates (tickles) the pup between the toes on any one foot using a Q-tip. It is not necessary to see that the pup is feeling the tickle. Time of stimulation 3 - 5 seconds. (Figure 1)



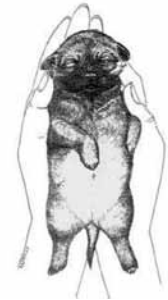
2. **Head held erect** - using both hands, the pup is held perpendicular to the ground, (straight up), so that its head is directly above its tail. This is an upwards position. Time of stimulation 3 - 5 seconds. (Figure 2)



3. **Head pointed down** - holding the pup firmly with both hands the head is reversed and is pointed downward so that it is pointing towards the ground. Time of stimulation 3 - 5 seconds. (Figure 3)



4. **Supine position** - hold the pup so that its back is resting in the palm of both hands with its muzzle facing the ceiling. The pup while on its back is allowed to sleep. Time of stimulation 3-5 seconds. (Figure 4)



5. **Thermal stimulation** - use a damp towel that has been cooled in a refrigerator for at least five minutes. Place the pup on the towel, feet down. Do not restrain it from moving. Time of stimulation 3-5 seconds. (Figure 5)



These five exercises will produce neurological stimulations, none of which naturally occur during this early period of life. Experience shows that sometimes pups will resist these exercises, others will appear unconcerned. In either case a caution is offered to those who plan to use them. Do not repeat them more than once per day and do not extend the time beyond that recommended for each exercise. Over stimulation of the neurological system can have adverse and detrimental results. These exercises impact the neurological system by kicking it into action earlier than would be normally expected, the result being an increased capacity that later will help to make the difference in its performance. Those who play with their pups and routinely handle them should continue to do so because the neurological exercises are not substitutions for routine handling, play socialization or bonding.

## Benefits of Stimulation

Five benefits have been observed in canines that were exposed to the Bio Sensor stimulation exercises. The benefits noted were:

1. Improved cardio vascular performance (heart rate)
2. Stronger heart beats
3. Stronger adrenal glands
4. More tolerance to stress
5. Greater resistance to disease

In tests of learning, stimulated pups were found to be more active and were more exploratory than their non- stimulated littermates over which they were dominant in competitive situations.

Secondary effects were also noted regarding test performance. In simple problem solving tests using detours in a maze, the non-stimulated pups became extremely aroused, whined a great deal, and made many errors. Their stimulated littermates were less disturbed or upset by test conditions and when comparisons were made, the stimulated littermates were more calm in the test environment, made fewer errors and gave only an occasional distress sound when stressed.



## Socialization

As each animal grows and develops, three kinds of stimulation have been identified that impact and influence how it will develop and be shaped as an individual. The first stage is called early neurological stimulation and the second stage is called socialization. The first two (early neurological stimulation and socialization) have in common a window of limited time. When Lorenz, (1935) first wrote about the importance of the stimulation process, he wrote about imprinting during early life and its influence on the later development of the individual. He states that it was different from conditioning in that it occurred early in life and took place very rapidly producing results which seemed to be permanent. One of the first and perhaps the most noted research effort involving the larger animals was achieved by Kellogg & Kellogg (1933). As a student of Dr. Kellogg's, I found him and his wife to have an uncanny interest in children and young animals and the changes and the differences that occurred during early development. Their history-making study involved raising their own newborn child with a newborn primate. Both infants were raised together as if they were twins. This study, like others that followed attempted to demonstrate that among the mammals, there are great differences in their speed of physical and mental development. Some are born relatively mature and quickly capable of motion and locomotion, while others are very immature, immobile and slow to develop. For example, the Rhesus monkey shows rapid and precocious development at birth, while the chimpanzee and the other "great apes" take much longer. Last and slowest is the human infant.

One of the earliest efforts to investigate and look for the existence of socialization in canines was undertaken by Scott-Fuller (1965). In their early studies, they were able to demonstrate that the basic technique for testing the existence of socialization was to show how readily adult animals would foster young animals, or accept one from another species. They observed that, with the higher level animals, it is easiest done by hand rearing. When the foster animal transfers its social relationships to the new species, researchers conclude that socialization has taken place. Most researchers agree that among all species, a lack of adequate socialization generally results in unacceptable behaviour and often times produces undesirable aggression, excessiveness, fearfulness, sexual inadequacy and indifference toward partners.

Socialization studies confirm that one of the critical periods for humans (infant) to be stimulated are generally between three weeks and twelve months of age. For canines the period is shorter, between the fourth and sixteenth weeks of age. The lack of adequate social stimulation, such as handling, mothering and contact with others, adversely affects social and psychological development in both humans and animals. In humans, the absence of love and cuddling increases the risk of an aloof, distant, asocial or sociopathic individual. Over-mothering also has its detrimental effects by preventing sufficient exposure to other individuals and situations that have an important influence on growth and development. It occurs when a parent insulates the child from outside contacts or keeps the apron strings tight, thus limiting opportunities to explore and interact with the outside world. In the end, over-mothering generally produces a dependent, socially maladjusted and sometimes emotionally disturbed individual. Protected youngsters who grow up in an insulated environment often become sickly, despondent, lacking in flexibility and unable to make simple social adjustments. Generally, they are unable to function productively or to interact successfully when they become adults.

Owners who have busy life styles with long and tiring work and social schedules often cause pets to be neglected. Left to themselves with only an occasional trip out of the house or off of the property they seldom see other canines or strangers and generally suffer from poor stimulation and socialization. For many, the side effects of loneliness and boredom set-in. The resulting behaviour manifests itself in the form of chewing, digging, and hard- to-control behaviour (Battaglia).

It seems clear that small amounts of stress followed by early socialization can produce beneficial results. The danger seems to be in not knowing where the thresholds are for over and under stimulation. Many improperly socialized youngsters develop into older individuals unprepared for adult life, unable to cope with its challenges, and interactions. Attempts to re-socialize them as adults have only produced small gains. These failures confirm the notion that the window of time open for early neurological and social stimulation only comes once. After it passes, little or nothing can be done to overcome the negative effects of too much or too little stimulation.

The third and final stage in the process of growth and development is called enrichment. Unlike the first two stages it has no time limit, and by comparison, covers a very long period of time. Enrichment is a term which has come to mean the positive sum of experiences which have a cumulative effect upon the individual. Enrichment experiences typically involve exposure to a wide variety of interesting, novel, and exciting experiences with regular opportunities to freely investigate, manipulate, and interact with them. When measured in later life, the results show that those reared in an enriched environment tend to be more inquisitive and are more able to perform difficult tasks. The educational TV program called "Sesame Street" is perhaps the best known example of a children's enrichment program. The results show that when tested, children who regularly watched this program performed better than playmates who did not. Follow-up studies show that those who regularly watch "Sesame Street" tend to seek a college education and when enrolled, performed better than playmates who were not regular watchers of the "Sesame Street" program.

There are numerous children's studies that show the benefits of enrichment techniques and programs. Most focus on improving self-esteem and self-talk. Follow-up studies show that the enriched "Sesame Street" students, when later tested were brighter and scored above average, and most often were found to be the products of environments that contributed to their superior test scores. On the other hand, those whose test scores were generally below average, (labelled as dull) and the products of underprivileged or non- enriched environments, often had little or only small amounts of stimulation during early childhood and only minimal amounts of enrichment during their developmental and formative years. Many were characterized as children who grew up with little interaction with others, poor parenting, few toys, no books and a steady diet of TV soap operas.

A similar analogy can be found among canines. All the time they are growing they are learning because their nervous systems are developing and storing information that may be of inestimable use at a later date. Studies by Scott and Fuller confirm that non-enriched pups, when given free choice, preferred to stay in their kennels. Other litter mates who were given only small amounts of outside stimulation between five and eight weeks of age were found to be very inquisitive and very active. When kennel doors were left open, the enriched pups would come bounding out while littermates who were not exposed to enrichment would remain behind. The non-stimulated pups would typically be fearful of unfamiliar objects and generally preferred to withdraw rather than investigate. Even well-bred pups of superior pedigrees would not explore or leave their kennels, and many were found difficult to train as adults. These pups, in many respects, were similar to the deprived



children. They acted as if they had become institutionalized, preferring the routine and safe environment of their kennel to the stimulating world outside their immediate place of residence.

Regular trips to the park, shopping centres and obedience and agility classes serve as good examples of enrichment activities. Chasing and retrieving a ball on the surface seems to be enriching because it provides exercise and includes rewards. While repeated attempts to retrieve a ball provide much physical activity, it should not be confused with enrichment exercises. Such playful activities should be used for exercise and play or as a reward after returning from a trip or training session. Road work and chasing balls are not substitutes for trips to the shopping mall, outings or obedience classes most of which provide many opportunities for interaction and investigation.

Finally, it seems clear that stress early in life can produce beneficial results. The danger seems to be in not knowing where the thresholds are for over and under stimulation. The absence or the lack of adequate amounts of stimulation generally will produce negative and undesirable results. Based on the above, it is fair to say that the performance of most individuals can be improved, including the techniques described above. Each contributes in a cumulative way and supports the next stage of development.

## Conclusion

Breeders can now take advantage of the information available to improve and enhance performance. Generally, genetics account for about 35% of the performance, but the remaining 65% (management, training, nutrition) can make the difference. In the management

category, it has been shown that breeders should be guided by the rule that it is generally considered prudent to guard against under and over stimulation. Short of ignoring pups during their first two months of life, a conservative approach would be to expose them to children, people, toys and other animals on a regular basis. Handling and touching all parts of their anatomy is also a necessary part of their learning which can be started as early as the third day of life. Pups that are handled early and on a regular basis generally do not become hand-shy as adults.

Because of the risks involved in under-stimulation, a conservative approach to using the benefits of the three stages has been suggested based primarily on the works of Arskeusky, Kellogg, Yearkes and the "Bio Sensor" program (later known as the "Super Dog Program").

Both experience and research have dominated the beneficial effects that can be achieved via early neurological stimulation, socialization and enrichment experiences. Each has been used to improve performance and to explain the differences that occur between individuals, their trainability, health and potential. The cumulative effects of the three stages have been well documented. They best serve the interests of owners who seek high levels of performance when properly used. Each has a cumulative effect and contributes to the development and the potential for individual performance.

## References

1. Battaglia, C.L., "Loneliness and Boredom" *Doberman Quarterly*, 1982.
2. Kellogg, W.N. & Kellogg, *The Ape and the Child*, New York: McGraw Hill.
3. Scott & Fuller, (1965) *Dog Behavior - The Genetic Basics*, University Chicago Press.
4. Scott, J.P., Ross, S., A.E. and King D.K. (1959) *The Effects of Early Enforced Weaning Behavior of Puppies*, *J. Genetics Psychologist*, p 5: 261-81



## National Breed Commission Report

By Chairman Mrs Joylene Neddermeyer

***Well another twelve months has passed and it is once again time to present my report to the National Breed Commission Meeting of the German Shepherd Dog Council of Australia.***

As I have stated previously I believe that holding a position for the German Shepherd Dog Council of Australia is an honour and a privilege. I have been able to gain a huge amount of information which has improved my knowledge of the German Shepherd Dog. I enjoy the work immensely and while it is time consuming it is also very rewarding.

I have always believed that it is paramount that information from our breeding schemes is available to all breeders both old and new for consideration in their breeding programs. This is an especially enjoyable part of the position and talks like that recently presented to the members of the GSDC Victoria, while very time consuming, the feedback by the members was very positive.

It should be noted that not everyone likes the information distributed especially if it is about their stud dog, but no one can say that factual data is not readily available to all.

As a result I sought a legal opinion prior to be presenting my talk in May in Victoria. For this reason the following disclaimer was included in each of my presentations.

- *The views and opinions expressed by me are my own and are based on my own observations and experience in this area:-*
- *Obtained Judges Licence for German Shepherd Dogs and Group 5 in 1982*
- *38 years' service to the National Breed Commission of the GSDCA*
- *GSDCA Breed Surveyor in 1985*
- *Breed Survey Registrar 1978 to 1987*
- *GSDCA HD Control Scheme Registrar 1987 - 1993*
- *GSDCA HD ED Control Scheme Registrar 1993 - 1997*
- *GSDCA Hereditary Diseases Committee Chair 1999 - 2001*
- *GSDCA Official Interpreter*
- *National Breed Commission Chair 2001 to current date*
- *I do not accept any responsibility should anyone act on the opinions I express and you should make your own enquiries and investigations if you intend to act on any of the information I present today.*

It is disappointing that this disclaimer was necessary but this does seem the way that society has been headed over recent times.

I do urge breeders and owners to take on board both the positives and negatives of sires for the betterment and continued development of the breed here in Australia. The same should be said when animals presented to breed survey are denied classification. Presenting an animal for assessment does not necessarily mean automatic classification. The major reason for animals being denied classification is gunshyness. I do believe however in the future the number of animals with incorrect bites, both overshot and level bites may be presented to breed survey, and as per the Breed Survey Manual will be deemed to be unsuitable for breeding.

I take a large amount of time to ensure that the information is correct on the actual GSDCA Breed Survey Certificate and most of the GSDCA Breed Surveyors in this room over the past twelve months have received a phone call from me to discuss issues with the GSDCA Breed Survey Worksheet. Unfortunately I do have to say that this issue has not shown any marked improvement over the past twelve months.

I believe the GSDCA Breed Survey Scheme and the GSDCA Hip Dysplasia and Elbow Dysplasia Control Scheme has meant that the dogs that we are showing and breeding are far superior to those animals of twenty to twenty five years ago.

I am more than happy to talk to anyone at anytime about any concerns that they may have, perceived or otherwise. I would much prefer to talk to people direct than via an email. To the members that have contacted me over the last twelve months asking for information or direction, I hope that I have been of some assistance in your decision making process.

I have always maintained that the fraternity need to have confidence that everything is dealt with on an even playing field and meets the requirements laid down by the GSDCA. The opportunity to talk and communicate with a large number of members at grass root level has been fantastic and has enabled me to be aware of their concerns relative to the future of the breed in Australia.

There is no easy answer to deal with these issues but one thing is sure - the promotion of our Breed Improvement Schemes and ensuring that the animals that we breed are sound in body and mind is paramount. There has been huge in roads that have been achieved over the past fifty years and the fact that I have been involved in the journey has given me a great deal of fulfilment.

With recent events it would appear that the next fifty years may take a different road with new breeding regulations and government legislation not only from within Australia but on a world arena, and as always we must promote our breed the "German Shepherd Dog".

### GSDCA Breed Surveyor Applications

Ms Melanie Groth has applied for reinstatement as a GSDCA Breed Surveyor and her application has been placed on the NBC Agenda and the NBC Executive has supported the application from Melanie for reinstatement.

I wish to advise the meeting that the NBC Executive have granted Mr Russell Wenham a six month leave of absence for personal reasons.

### GSDCA Tooth Certificates

Two GSDCA Tooth Certificates has been issued since the 2016 GSDCA Annual General Meeting.

### GSDCA Title Verification

All GSDCA verifications for imported animals and imported semen have been processed during the year as per the GSDCA Regulations.

## Sires Progeny at 2016 GSD National Show and Trial

The Sires Progeny is an important part of the National Show and Trial and the way that it has been developed over recent years I believe is seen as a positive achievement and very well accepted by the fraternity. The value of the Sires Progeny at the National and the subsequent report as published for the fraternity cannot be understated.

In total eighteen groups were eligible but only thirteen groups were presented and assessed by the NBC Executive. Amazingly of the sires, only two were locally bred with eleven being from imported sires. Five sires presented a group for the first time.

It should be noted that nine of the thirteen sires presented carry the Quanto Wienerau bloodline, and four sires carry the Mutz Pelztierfarm bloodline.

As stated last year the NBC Executive felt that the overall quality of the groups was not as good as previous years and uniformity within the groups in some cases is not evident. The groups however of Toby Plassenburg, Xaro Plassenburg and Yester Feuermelder were very impressive with a number of high quality animals presented of the desired type and overall harmonious construction.

It is disappointing that the number of Australian bred animals being able to present a group has decreased with this year with only two locally bred sires: Orrinshir Elton John and Schaeferhund Xesko being able to present a group. Once again this confirms the NBC Executive's opinion that a number of Australian bred sires have not been seriously considered by the breeders and have been overlooked as having the ability to positively further add to the development of the breed in Australia. Again the NBC Executive would stress it is essential that we look at what we have in our own "backyard" before heading off on the unknown path of using the latest 'import'.

The National Breed Commission Executive would like to thank all exhibitors for making their animals available for assessment in the Sires Progeny at this year's National.

A copy of the full Sires Progeny report is printed. *Please refer to 2016 National Edition of the QNR.*

As the Sires Progeny is no longer printed in the GSDCA Breed Survey Book I would like to make the suggestion that copies of the Sires Progeny report for the past three years are placed on the GSDCA Website.

## 2015 Sieger Show

While I did not attend the Sieger Show in 2015 I have translated the basic statistics of the VA males and sires progeny report as published in the December SV Zeitung which you may find interesting.

Once again a number of Australians will be travelling to the 2016 Sieger Show and then on to the Italian Sieger Show. I hope you enjoy both shows and travel safely.

## Overview of the breed currently in Australia

As an action from the 2015 NBC meeting it was requested that directives be sent to all GSDCA Breed Surveyors on a number of issues discussed and identified at the meeting. I will talk in more depth at the meeting about these directives and the impact that a number of issues are having on the soundness of the breed and the impact these concerns are having on the public perception on the health and the suitability of a German Shepherd Dog as their family pet.

### Size

It would appear that there has been some improvement in this area. However there is no doubt that the majority of animals, especially our females stand at the upper level of the desired standard of size. The change to the size requirement in 2008 in my opinion has been beneficial and also there is a degree of responsibility from the breeders as well, to take some hard decisions on animals that are clearly well outside the standard and not include these animals in their breeding program.

In regards to breed survey it is imperative that the measurements are carried out in a uniform manner and it would appear that this could still be an area of inconsistency.

Again I remind all breed surveyors of the only acceptable description of size at breed survey. This of course should be used by judges in their critiques when officiating at shows so that there is a uniformity of terminology for all animals.

Dogs (cms) :	Bitches (cms) :	Description :
60 -61	55 -56	Small
61-62	56-57	Under medium size
62-63	57-58	Medium size
63-64	58-59	Above medium size
64-65	59-60	Large
65-66	60-61	Very large
Above 66	Above 61	Oversize

For animals that are described as very large an additional comment is made under particular virtues and faults – "standing on the upper limit of size".

At the last NBC meeting the GSDCA Breed surveyors identified that over-angulation and the instability of the hindquarter is a major issue affecting the breed. (Please refer to Attachment 4) Breeders certainly need to address the following issues in their breeding program but currently I am not sure that this is the case and in some cases they are receiving mixed messages from GSDCA Breed Surveyors and GSDCA Specialist Judges. Just take some time at shows to watch experienced handlers having trouble in standing exhibits in the ring.

It is apparent that this is a major issue currently affecting the breed.



## Over-angulation of the hindquarter - very loose hock joints

While we have had loose hock joints in the breed since the lifting of the importation ban in 1972, there is now a dramatic increase in the number of progeny with an excessive and unstable hindquarter. The severe cases of these animals should be penalised at shows and at breed survey. The increase of bloodlines in Australia which produce slightly deep to over-angulated animals will mean linebreeding on these animals will see this problem ingrained very quickly in the breed. It is also a trait that the general public find offensive.

The over-angulation of the hindquarter **impedes the working capability and affects the endurance and versatility of the dog.** It has been highlighted at recent meetings that this is not only a major problem for us as breed surveyors, judges or breeders **but more importantly for the public that wish to buy a German Shepherd Dog as their family pet, which of course is the majority of the animals that we breed.**

These animals are from current sires in our breeding program. One can see why the public talk about sloping backs and veterinarians express the opinion that the GSD has major problems with looseness and instability of the hindquarter. I urge breeders to consider very carefully selection of a suitable breeding partner for the wellbeing of the breed.



## Strength of dentition, incorrect scissor bite

Since 2008 I have been mentioning the problem in regards to strength of dentition within our animals. After checking dentition at the recent National Show and Trial, again I have to report that the situation has deteriorated and at the 2016 National Show and Trial there is no doubt the number of incorrect bites has certainly increased. It is apparent that the strength of dentition has deteriorated. The number of animals with underdeveloped teeth is far too high. I urge all GSDCA Breed Surveyors and GSDCA Specialist Judges to be more aware of checking dentition at breed survey and in the show ring. Again it appears that mixed messages are being sent in regards to the penalisation of dentition faults. It should be noted that just because the canines are in place does not mean that the bite is a correct scissor bite. The number of very close scissor bites or level bites was very surprising at the 2016 National Show and Trial. Incorrect alignment of side teeth is also on the increase. Please refer to the photos below.

In conjunction with the Judges Chair I have prepared a chart to remind GSDCA Breed Surveyors and GSDCA Specialist Judges of the penalisation for dentition faults. (Refer to Attachment 8)



## Strength of upper and the lower jaws

One can ask if the problem that we have with strength of dentition is directly related to the strength of upper and lower jaws. The overall structure of the skull and foreface is lacking and in my opinion is of concern. Do we have currently many heads like these?

Or is this more common?



## ***Short and deep in the lower chest – extreme tuck up***

The shortness of lower chest has been imbedded in our breed since the early 1990s. A number of animals both here and in Germany are now displaying not only a short lower chest but are also deep in lower chest proportions. (e.g. like a Greyhound, Great Dane or Doberman) I would suggest that this is one reason why in Germany the height and depth of chest measurements are being recorded at their shows and an average of measurements of sires has been noted in the sires progeny report. The past twelve months has seen an increase in animals being presented to breed survey as slightly deep in depth of chest proportions. (Refer to Attachment 7, Depth of chest proportions)



## ***Set and carriage of ears***

Size, set and placement of ears is also an area of concern. In the current bloodlines in Germany, and also of our locally bred dogs, there is an issue with size, set and placement of ears. There is no doubt that in the past twelve months we have seen issues relative to size, set and placement of ears. Incorrect ears detract from a GSD and GSDCA Breed Surveyors need to be aware of the linebreeding that will cement this problem. There is no doubt what picture depicts correct carriage and true GSD expression.

The GSDCA Breed Surveyors and Specialist Judges need to agree on the issues and the relevant penalisation (if any) so that a consistent message can be relayed to the fraternity. As on the issue on size, the conveyance of a consistent message is not necessarily easily achieved.



## ***Photographs for Breed Survey***

Thank you to the owners that have supplied photographs in the first instance and thank you to the owners that have responded to my repeated requests.

Just remember that the photograph remains with your animal forever and I cannot imagine anyone not wanting to show their animal to the best advantage. Please refer to the article written by Louisa Rodger that appeared in the June 2007 National Quarterly Review.

## ***Uniformity of GSDCA Breed Surveys***

This matter was discussed at length at the 2014 and 2015 NBC meeting and while I believe that there has been some minor improvement, there is a long way to go. My concerns will be tabled at the meeting of the GSDCA Breed Surveyors and Specialist Judges on Sunday morning.

I have advised on numerous occasions that the preliminaries are to be conducted by all Breed Surveyors, so even if you have not been nominated to complete the GSDCA BS7 dog on the day I expect Breed Surveyors to be present and actively participate in the Breed Survey e.g. measuring and discussion process.

I was of the opinion that the 60 day motion asking for members' approval for the NBC Chair to attend the various breed surveys (maximum of two a year) would have been beneficial to further uniformity of conduct of breed surveys and to keep open lines of communication at a more one to one level between GSDCA Breed Surveyors and the NBC Chair. While the vote was close the 60 day motion was defeated.

## ***Conclusion***

To all of my Registrars thank you once again for your hard work and time and effort to ensure the smooth running of the GSDCA Breed Improvement Schemes. It is a pleasure to be able to work with you as a team.

To all Member Clubs, Breed Surveyors, Judges and individual members thank you for your support, not only over the past twelve months but since my appointment to this position.

I would like to comment on the breed forum to be held on Saturday 30th July. I am sure that it will be a very beneficial time talking about and discussing our breed and to consider the expressed views of the fraternity. I would like to take this opportunity to thank Melanie Groth and Janet Haase for their work and expertise in acting as facilitators for the forum, your assistance is very much appreciated. I would also like to thank all of the members that took the time to complete the survey and expressed their views on the issue of breed survey.

I enjoy the work, the information gained and I am only too happy to be of assistance or answer any queries that you may have in regards to any area under the umbrella of the National Breed Commission. Please feel free to telephone me or email and I will do my best to answer your questions as soon as possible.

I would like to thank my fellow Executive both for your support and for combining to work together for the betterment of the German Shepherd Dog.

I have been very fortunate and very privileged to be elected to the position of National Breed Commission Chairman initially in February 2001 and with the support of the fraternity have been elected until February 2017.

I have gained a great deal of pleasure from my involvement in the GSDCA and the breed and believe that as an organisation we are second to none.

However there comes a time when one needs to step aside. The position is not an easy one and to say at times there have been some very low points is an understatement, but I must say that the highs have far outweighed the lows. I hope that you believe that I have made a difference and acknowledge the further development of the breed in Australia during my time in the position.

As a parting comment I do have some concern for the fraternity in regards to our culture but if we all adhere to the following three basic values - RESPECT, ACCOUNTABILITY AND TEAMWORK, there is no limit to what this organisation can achieve.

In conclusion, this is my final report to a NBC meeting and my tenure in this position will conclude at the 2017 GSDCA AGM. Thank you everyone and I take this opportunity to wish you all the very best with your future endeavours with the 'GERMAN SHEPHERD DOG'.

Respectfully submitted,

*Joylene Neddermeyer*  
NBC Chairman (31 July 2016)



## Head, Eyes & Ears

*In this edition the youth page is switching its attention to the structure of the German Shepherd Dog. The first instalment will focus on all the important features of the head, eyes and ears. As you will read through the article you will see that it draws comparisons to different features that are seen in the GSD head.*

*I would like to say a big thank you to Louis Donald for writing this article and allowing us to share it here for you all. I hope that it helps you all to be aware of what we should be aiming for in our breed and also help to clarify any comments you may hear at shows or breed surveys in regards to these areas.*

*If you have any questions please feel free to email me at [jess\\_lynch@hotmail.com](mailto:jess_lynch@hotmail.com) and I will do my best to get them answered for you.*

*Jess Lynch*  
GSDCA Youth Officer

## Head



*A beautiful male head, not the broadest skull but a lovely head nonetheless.*



*A beautiful female head with the desired expression*

- Expressive, alert, noble, a look of keen innate intelligence, dry – meaning not lippy and jowly, well coloured and well pigmented with dark almond shaped eyes
- The head must be in proportion to the dog, the bigger the dog the bigger the head should be.
- The head should be wedge shaped looking down on it.
- Proportions are 50/50/50 – skull width/skull length/muzzle length.
- Dry – as in not lippy/jowly – as stated earlier this can be a problem with very large dogs.  
Lower jaw should be strong.  
Stating the obvious but a dog must look like a dog and a bitch must look like a bitch. Too often bitches with a narrow head and fine fore face are critiqued as being 'feminine'



# GSDCA youth education



*Weak narrow refined fore face*



*Correct male and female head ratio*

- Top of the skull should be 'slightly arched' when viewed from the side as well as the front.
- Slightly is the word here – no hint of a dome.
- No furrow ideally, a little bit is OK. Close set ears create a furrow, like someone frowning.
- Planes of the top of the skull and muzzle should be parallel when viewed from the side. If this is not the case this creates a dish-faced appearance. I have noticed more and more dogs in Germany that have this and then surprisingly I noted that this has been removed from the latest standard?!



*Too lippy - see upper lips not just lower lips but correct parallel planes and balanced proportions of skull and foreface length.*



*Tight lips but diverging planes of the skull and foreface, slightly domed skull and sl. long sl. weak foreface.*



*Stop too defined and sl. short foreface*

- The stop must be clearly evident, gradually sloping but not sharply defined.
- Top of the nose should be straight; a Roman nose is not desirable.
- Lips dark and taut.
- Nose black.
- There are a lot of dogs where the head is too refined but at the same time with increased size there is a growing tendency to heads that are coarse and not 'dry' as the standard requires them to be and this lack of dryness is seen in the skin of the head but it is more obvious in the loose jowly lips. For many people it is more evident in the lower jaws lips because the excess flesh to the lower lips is easier to see than the upper jaws lips as seen below.



*Lippy, not dry head, Roman nose.*



# GSDCA youth education

## Eyes

- Medium size
- Almond shaped
- Slightly slanting
- Not protruding
- As dark as possible – past references to ‘matching the surrounding coat’ no longer applies
- Light eyes are not desirable – this is an aesthetic issue, as with round eyes they spoil the expression, light eyes are noted in the standard as being an indicator of paling pigment!



*Correct, slightly slanting, dark almond shaped eyes*



*Light eyes*



*Round, slightly protruding eyes*

## Ears

- Medium size
- Carried erect
- Pointed
- Facing forward
- Semi erect ears, low set ears, inward tipped ears and infirm ears are a ‘serious fault’ such dogs are dropped a grading
- Ears should be in proportion to the size of the dog, a growing trend is for ears getting too large, a little thin in their leather and they move around during gaiting and sometimes we see ears that have a roll backed tip



*Correct ears*



*Large open inward tilted ears*



*Large ears*



*Soft ears with roll back tip*

# OTHER information

## GSDCA Health Form

***Tell us about your dog's health  
– so that it can help others.***

This is a scheme for the betterment of the GSD breed.

It is extremely important that our Health and Welfare Committee can receive data relating to the health of the GSD in a timely manner.

We have a form for capturing health information regarding the GSD, which can be completed by yourself and your vet. Members submitting this form will improve our knowledge of the most current and common health issues affecting our breed.

The form is available on the website or from the GSDCA secretary.

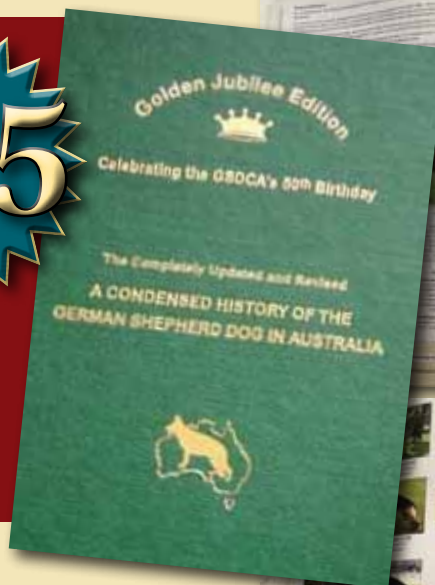
Contents submitted on the form are confidential and for official use only.



## Revised And Updated Condensed History Of The German Shepherd In Australia

**\$75**

Add \$20  
postage  
and  
handling  
within  
Australia



### GOLDEN JUBILEE EDITION

The Golden Jubilee Issue is a comprehensive full colour 864 page history of the breed and history of the GSDCA since its founding. The book contains thousands of photos, mostly in colour. This edition captures all that was included in earlier publications up to 1990 and then chronicles events and history up to 2010, the date of the Council's 50th Anniversary celebration.

Aside from providing readers with the history of Council's breed improvement schemes, readers will be able to follow and trace back to all of our National Shows, Main Breed Shows, history of the GSDCA and its serving members as well as history of the affiliate clubs.

Top producing sires and dams for the 40 odd year period from the lifting of the import ban in 1972 are prominently featured, as well as articles from breeders.

***To purchase a copy of the GJE, go to the GSDCA  
website and complete the payment order form.***

***[www.gsdcouncilaustralia.org](http://www.gsdcouncilaustralia.org)***



# SECRETARY'S report

## Summary of Motions from the 55th Annual General Meeting of the GSDCA Inc.

It is with pleasure I present for your information, the results of motions as "Carried", "Lost", "Withdrawn" from the 55th Annual General Meeting of the German Shepherd Dog Council of Australia Inc., held on the 13th & 14th February 2016, in Adelaide, South Australia.

All motions carried will take effect as of the 1st July 2016 (except where the meeting agreed to allow immediate action), and for full details as per the minutes, please contact your Club Secretary.

*Val Moody*

Honorary Secretary - GSDCA Inc.

## ANNUAL GENERAL MEETING

### 2.3 Ratification of Matters Arising from the 54th AGM under the 60 day rule:

Motion 1. "That the following Queensland ANKC licensed Obedience Judge who is "friends of the breed" be put forward for inclusion on the GSDCA Supplementary Obedience Judges list – Mrs. Annie Tamblyn.

**CARRIED.**

Motion 2. "That Police Bitch "Angel" be presented with the GSDCA Outstanding Canine Service Award".

**CARRIED.**

### 13 Determination of Scale of fees for financial year 2015-2016

#### 13.1 Motion:

"That as from the 1st July 2016 the cost of a GSDCA Tooth Certificate will increase from \$35 to \$40."

**CARRIED.**

#### 13.2 Motion:

"That as from the 1st July 2016 the cost for a GSDCA Hip Dysplasia/Elbow Dysplasia Control Scheme Appeal will increase from \$100 to \$130."

**CARRIED.**

#### 13.3 Motion:

"That as from the 1st July 2016 the cost for GSDCA Hip Dysplasia/Elbow Dysplasia Control Scheme Application forms be increased by \$3 as follows:

HD/ED Form – Hips & Elbows	from \$65 to \$68
HD/ED Form – Hips Only	from \$47 to \$50
HD/ED Form – Elbows Only	from \$30 to \$33

**CARRIED.**

#### 13.4 Motion:

"That as from the 1st July 2016 the cost of a QNR Subscriptions Private Subscribers increases by \$5 as follows"

Australia	from \$50 to \$55
New Zealand	from \$58 to \$63
SE Asia	from \$60 to \$65
UK/Europe/USA/Canada	from \$65 to \$70

**CARRIED.**

#### 13.5 Motion:

"That as from the 1st July 2016 the cost increases for the National Show Obedience Excellent Medal (Triangle) will be increased from \$18.45 to \$22.00."

**CARRIED.**

#### 13.6 Motion:

##### Rescind Current Regulation

3.6.3.3 Any animal with a recognized imported title/classification prior to entry into GSDCA Breed Survey Scheme shall provide the following documentation to the NBC Chairperson.

e) No fee is applicable however should any discrepancy arise then the SV or controlling body is contacted and any costs incurred by this GSDCA shall be payable by the owner of the animal.

##### New Regulation

3.6.3.3. Any animal and/or imported semen with an imported title/classification/registration prior to entry into GSDCA Breed Survey Scheme and prior to advertising in the Quarterly National Review shall provide the following documentation to the NBC Chairperson.

e) That as from the 1st July 2016 a charge of \$25 is applicable for all GSDCA Title Verifications. In the case of any discrepancy arising and the SV or controlling body is contacted, any additional costs incurred by the GSDCA shall be payable by the owner of the animal.

**CARRIED.**

### 16 Matters referred to AGM from National Breed Commission

#### 16.1 GSDCA BS1 Form application for Breed Survey.

##### Motion:

"That the attached amended GSDCA BS1 Form – Application for Breed Survey is ratified as per the decision at the 2015 NBC Meeting".

**CARRIED.**

#### 16.2 Changes to the GSDCA Breed Survey Manual

##### Motion:

"That 7.9 Character and Temperament of the GSDCA Breed Survey Manual be amended to allow animals that are deemed to be sufficiently firm in nerves to obtain a Breed Survey Class 11 classification."

**LOST.**

#### 16.3 To add an additional section in the GSDCA Breed Survey Manual under "Section 7 Specific Requirements".

##### Motion:

**New section to be listed as 7.10 Hindquarter Angulation.**

*For dogs and bitches which are deemed to display excessive hindquarter angulation and/or instability of the hindquarter, shall only be able to obtain a Breed Survey Class 11 classification".*

**CARRIED.**

#### 16.4 Changes to the GSDCA Breed Survey Manual

The meeting agreed that this should be an action not a motion and be automatically done.

##### ACTION:

Section 15.8 - GSDCA FORM BS 8 -REGULATIONS FOR BREED SURVEYS and

Section 15.9 - DEFINITIONS FOR BREED SURVEYS be amended by the NBC Chairman and to reflect the agreed changes.

**CARRIED.**

# SECRETARY'S report

## 16.5 Adoption of the proposed amendments to GSDCA BS7 Breed Survey Worksheet.

### Motion:

"That the changes (highlighted) to the GSDCA BS7 Worksheet for Breed Survey be adopted". **CARRIED.**

*After further discussion the NBC Executive suggested the following amendment to the GSDCA BS7 worksheet to read as follows:*

- 23) Tail: very good length, slightly long, not quite correct carriage.

Any other comments relative to the tail should be recorded under Section V Particular Virtues and Faults.

**Motion:** To amend the GSDCA BS7 worksheet item No. 23) – Tail as above. **CARRIED.**

**Motion:** To amend the GSDCA BS7 worksheet by removing the wording "sufficiently firm" under condition of nerves from the worksheet. **CARRIED.**

**Motion:** That the new GSDCA BS 7 worksheet be adopted. **CARRIED.**

## 16.6 Changes to access for Members of the GSDCA Member Clubs on the GSDCA Database.

### Motion:

"That access for the members of the GSDCA on the GSDCA Database is increased to include search options by sire and dam on data from the GSDCA HD/ED Scheme and GSDCA Breed Survey Scheme be ratified". **CARRIED.**

## 16.7 Approval for changes for access for GSDCA Members on the GSDCA Database.

### Motion:

"That to ensure the further development of the GSDCA Database, the NBC Executive is able to suggest and approve changes for access for members of the GSDCA on the GSDCA Database as and when required". **CARRIED.**

## 17 Matters referred to the AGM from the GSDCA Breed Surveyors and GSDCA Specialist Judges Meeting

### 17.1 Motion:

"That a closed meeting of ALL GSDCA Breed Surveyors, GSDCA Specialist Judges and GSDCA Specialist Trainee judges will be held at the Annual NBC & Judges Committee Meeting". **CARRIED.**

## 18 Matters referred to the AGM from the Judges Committee

### 18.1 Motion: Sam Bonifacio Trophy

"That the scoring system for the Sam Bonifacio Trophy, be changed to introduce a "sliding scale" for classes with less than ten exhibits competing in a conformation class, and less than 5 exhibits competing in an obedience class and the following apply":

#### The Sam Bonifacio Trophy: Notes & Scoring Criteria

1. The scorer shall be appointed by the GSDCA Executive.
2. The trophy will be awarded at the GSDCA National GSD Show & Trial to the Kennel that receives the highest aggregate score based on the following:
  - The points awarded for the Baby Puppy, Minor Puppy and Puppy class winners are one point for each animal placed on the pegs, up to a maximum of 10, and will reduce by one point for 2nd, 3rd, etc.
  - The points awarded for the Junior, Intermediate and Open class winners are two points for each animal placed on the

pegs, up to a maximum of 20, and will reduce by two points for 2nd, 3rd, etc.

- The points awarded for the Obedience class winners are two points for each animal placed on the pegs, up to a maximum of 10, and will reduce by two points for 2nd, 3rd, etc.
- Additional points will be allocated for:

• Each animal exhibited and or trialed	2 points
• Each animal graded Excellent in Show or Obedience	5 points
• Breeders Group winner	10 points
• Dual Performance winner	20 points
• Gold Medal winners	20 points
• Silver Medal winners	15 points
• Bronze Medal winners	10 points
- 3. There shall only be one winner, so in the event of a tied score the following will be used to establish a winner:

- The Kennel with the highest number of Excellents in Show and Obedience,

If still a tie;

- The Kennel with the most excellent graded dogs behind the kennels highest placed animal in the Open classes,

If still a tie;

- The Kennel with the most excellent graded dogs behind the kennels 2nd highest animal in the Open classes, and so on until a winner is decided. **CARRIED.**

## 18.2 Standardise Major Trophies for the National.

### Motion:

"That the GSDCA investigate some samples of major trophies for the GSDCA National and that these trophies be only used at GSDCA Nationals". **CARRIED.**

### 18.3 Motion:

"That the GSDCA Specialist Judges Extension Course Regulations be amended to reflect the following changes:

6.2.3.1 Ring Craft/ Methodology Appointments currently, to 6.2.3.1 STAGE 1 – MENTORING

If successful, replace wording in the regulations of ring craft/ methodology with Stage 1.

6.2.3.2 Aspiring Judges Appointments (Examinations) currently, to 6.2.3.2 STAGE 2 – EXAMINATIONS. **CARRIED.**

### 18.4 Motion:

"That the GSDCA Proposed format for State Breed Exhibitions for all Affiliate Clubs as tabled be approved".

The following amendments to the Motion were agreed upon.

- o Up to two Breed Survey resident judges may be appointed.
- o Sires progeny to include baby puppy and upward.
- o Sires progeny – a minimum of 5 animals.
- o Remove "aged 9 months or older."
- o Open Judge, judges Open class only and observes the other classes.
- o Baby to intermediate will be judged as a normal show and open class judged on pedigree with the emphasis on type.
- o Clubs have the choice of what classes they judge.
- o Breeders group - sables are not to be excluded.
- o Animal must be successfully Breed Surveyed.
- o Change breed surveyor judges who are resident.
- o Clubs can conduct property classes in order to promote the breed. Amendments Carried

The Chair said that the meeting will take the Amendments as written and the document now presented as being adopted.

### Motion:

"That the document be amended and be a working document to conduct State Breed Exhibitions. **CARRIED.**



## Motion:

"That the Amendments to take effect from the 1st January 2017".

**CARRIED.**

## 18.5 Motion:

"That the GSDCA Specialist Judges Extension Course Regulations be amended to reflect the following changes from:

- 6.2.3.1.2 Following the completion of each of the three (3) ring craft/methodology appointments a written report after each appointment, the Aspirant Judge ring craft/methodology report is to be completed by the applicant and sent to the Chair of the Judges Committee, within two weeks of the completion of their ring craft/methodology appointments. Should the report not be received within this time frame, the aspirant's ring craft/methodology appointments will not be acknowledged as counting towards the requirements for the successful completion of the course.
- 6.2.3.1.3 The successful completion of these ring craft/methodology appointments deems the applicant eligible to undertake the next part of the course. Notification to the applicant is made by the Chair of the Judges Committee.

## Recommended changes are:

- 6.2.3.1.2 Following the completion of each of the three (3) mentoring appointments a written report is to be completed by the applicant and sent to the Chair of the Judges Committee, within two weeks of the completion of their mentoring appointments. Should the report not be received within this time frame, the aspirant's mentoring appointments will not be acknowledged as counting towards the requirements for the successful completion of the course.
- 6.2.3.1.3 **During Stage 1, all Aspirants are to complete 50 written critiques that can be completed at shows, breed surveys or on training days. They need to be reviewed and signed by a GSDCA Specialist Judge on the day and then sent to the GSDCA Judges Committee Chair.**
- 6.2.3.1.4 The successful completion of Stage 1 deems the applicant eligible to undertake the next part of the course. Notification to the applicant is made by the Chair of the Judges Committee.

**CARRIED.**

## 18.6 Motion:

**"Changes to current GSDCA National Show Manual".**

## 18. BREEDERS GROUPS

A Breeders Group Team must consist of five (5) animals from the one Kennel. A minimum of two (2) sires and two (2) dams, are required to make up the group. A separate entry form indicating entry to the class is required by the close of entry. The list of animals competing in each group must be handed to the Show Secretary by completion of Judging on Day One. Breeders Groups should consist of only one coat type, (however Breeders may enter more than one group).

The Winning Group will be awarded a Plaque and a Tri-colour Sash.

## Proposed Amendment:

## 18. BREEDERS GROUPS

- A Breeders Group Team must consist of five (5) animals from the one Kennel.
- A minimum of two (2) sires and two (2) dams, are required to make up the group, and are at least 9 months of age.
- A separate entry form indicating entry to the class is required by the close of entry.
- The list of animals competing in each group must be handed to the Show Secretary by completion of Judging on Day One. Breeders Groups must consist of only one coat type, (however Breeders may enter more than one group).
- The Winning Group will be awarded a Plaque and a Tri-colour Sash.

**CARRIED.**

## 18.7 Motion:

**"Changes to current GSDCA National Show Manual".**

## 21. SHOW SCHEDULE

Should be lodged with the Host Club's Canine Control in accordance with local regulations as they exist at the time and the ANKC requirements for overseas Judges, i.e. Special contracts and clearances (refer Appendix "F"). The Judges contracts are currently required to be with the ANKC twelve (12) months prior to the show. The approved Schedule to be printed in the National Review, in the issue that will allow approximately six (6) months prior to the event, (e.g. should the National be in May the suitable issue of the Review would be December).

The Host Club must apply to their Kennel Control not less than two (2) years prior, or as required by their Kennel Control for their approval to conduct the National.

The GSDCA Secretary of Council must also write to the ANKC Administrator (in accordance with the "ANKC Regulations for the conduct of National Breed Councils") seeking approval for the Host Club to conduct the National – Allow two (2) years (as above).

Serious thought should be given to the scheduling of classes at the National (i.e. The number of dogs to be judged each day, the comfortable inclusion of Sire's Progeny and Breeders Group, as well as considering the climate at the time that the National is to be conducted). Consideration should also be given to exhibitors who must feel that they have been given equal time to each class.

It is suggested that a senior class (i.e. Junior, Intermediate and Open) are judged each day, balanced with Puppy classes and Sire's progeny, and Breeders group, which shall be detailed in the schedule.

*A National Report, including the proposed entry fees should be presented to the GSDCA AGM. The GSDCA approves the proposed entry fees, at the GSDCA AGM 2 years prior to the event.*

**CARRIED.**

# SECRETARY'S report

## 18.8 Motion:

"Changes to current GSDCA National Show Manual".

### Currently 2.6 states:

Responsible for the financial records, payment and collection of all monies relating to the Show. The Treasurer should present an updated statement of income/expenditure at each Show Committee meeting, prior to and after the Show. A full financial report should be submitted to National Council no later than 31st August of the year of the National has this changed. Ensure that the Levy from entries are sent to the Treasurer GSDCA within 21 days of the closing date of entry.

### Proposed change 2.6:

Responsible for the financial records, payment and collection of all monies relating to the Show. The Treasurer should present an updated statement of income/expenditure at each Show Committee meeting, prior to and after the Show. A full financial report should be submitted to National Council at the next AGM following the National Show. The levy will be calculated immediately after the show by the GSDCA Treasurer based on entries catalogued and an invoice sent to the Club.

**CARRIED.**

## 18.9 Motion:

"That the GSDCA National Show Manual as amended and tabled be approved".

**CARRIED.**

## 19 Matters referred to the AGM from the GSDCA Obedience Committee – Nil

## 20 Other Matters referred to the AGM

### 20.1 Motion:

"That the GSDCA consider supporting the research being undertaken by Dr. Claire R. Sharp BSc BVMS, MS, DACVECC on Gastric Dilatation-Volvulus (GDV).

It was agreed that, the Executive be given the power to enact once the proposal is received from Candy Baker.

**CARRIED.**

### 20.2 Motion:

"That as of 01/01/2017 the Character & Working Assessment Test (C&WA) will be a prerequisite for Breed Survey.

The meeting agreed that this item will be referred to the NBC Meeting.

### 20.3 Motion:

"That from the 2017 German Shepherd National Show and Trial the three judges for the Sires Progeny groups shall be selected from the Australian Breed Surveyor lists by the Member Clubs. The selection of these three panel members will occur at the same time as the conformation judges are selected for each National.

**LOST.**

### 20.4 Motion:

"That the selection panel of Breed Surveyors to judge the Sires Progeny for the 2016 and 2017 National, be selected at the 2016 Annual General Meeting and hence forward yearly at the AGM in conjunction with the selection of the conformation judges."

**WITHDRAWN**

## 20.5 Motion:

"That Member Clubs should be offered advertising of their Specialist Championship Shows in the National Review at a greatly reduced rate. It is suggested that a quarter page advertisement be free of charge, a fee of \$50.00 for a half page ad and \$100 for full page ads, if a Club wishes to maximise their exposure. Hence forward charges will be in accordance with CPI."

**LOST.**

## 20.6 Motion:

"That affiliated German Shepherd Clubs not be charge for advertising the GSDCA National Show & Trial in the Quarterly National Review which clubs host on behalf of the GSDCA Inc."

**WITHDRAWN**

## 20.7 Motion:

"That all recommendations made by the National Breed Commission (NBC), Breed Surveyors Meeting, Judges Meeting and Obedience Meeting shall be presented to the next GSDCA AGM for acceptance. Urgent matters can be dealt with as an SGM."

**WITHDRAWN**

## 20.8 Motion:

"That critiques from National Shows shall be posted on the GSDCA website as soon as possible after the National. Publication in the Quarterly National Review will be limited to the conformation placings

1 to 10, and Obedience Placings 1 to 5."

*Following discussion the ACT agreed to SA's request that the motion be amended and split into two parts as follows:*

### Motion:

"That the Motion be split into two parts".

**CARRIED.**

### Motion:

"That all results and critiques from GSDCA National Shows shall be posted on the GSDCA website as soon as possible after the National Show and Trial".

**CARRIED.**

### Motion:

"That Publication in the Quarterly National Review will be limited to the Conformation placings 1 to 10, and Obedience Placings 1 to 5."

**LOST.**

## 20.9 Motion:

"That an annual 'Presidents Meeting' shall be held over the AGM weekend. Attendance will be limited to Club Presidents or their nominated representatives only. The GSDCA Constitution Clause 22.2 shall not apply to this meeting." (Constitution as amended Feb 2014).

**LOST.**

*The meeting was advised that this motion is invalid as it contravenes the Constitution.*



# SECRETARY'S report

## 20.10 Motion

"That the requirement (5.5.3.1 a) for National Conformation Judges to be German resident SV shall be rescinded and replaced with: Any SV licensed Judge (not SV Foreign list) shall be eligible to judge at the National, subject to the restrictions regarding previous Australian Judging appointments".

### 5.5.3.1 Conformation Judges:

The criteria for conformation judges to be selected and included on to the GSDCA National GSD Show Judges List is that:

- They are resident German SV Judges;
- They must have judged on two separate occasions at GSDCA Member Club or sanctioned shows after which they can be nominated by a Member Club to be added to the list;
- The list of approved judges will be reviewed at the annual GSDCA Judges Committee (JC) Meeting where judges may be added and or removed upon a request from a Member Club;
- The list as reviewed by the JC Meeting will be presented to the AGM.
- Member Clubs hosting the National will have the right to choose 2 of, plus 2 reserves from a shortened list as nominated by the GSDCA Executive;
- The GSDCA SV Liaison Officer will contact judges as selected. In the event that none of the 4 chosen judges are able to accept the invitation the GSDCA Executive will liaise directly with the host Member Club and agreement sought to approach other judges as listed;
- Judges will be offered the appointment on the understanding they cannot judge in Australia for two years prior to the date of the National they have been invited to Judge.

### Motion Amended:

#### Motion:

**"Any SV Licensed Judge shall be eligible to judge at the National subject to the restrictions regarding previous Australian Judging appointments".**

### 5.5.3.1 Conformation Judges:

The criteria for conformation judges to be selected and included on to the GSDCA National GSD Show Judges List is that:

- Any SV licensed Judge shall be eligible to judge at the National, subject to the restrictions regarding previous Australian judging appointments.
- They must have judged on two separate occasions at GSDCA Member Club or sanctioned shows after which they can be nominated by a Member Club to be added to the list;
- The list of approved judges will be reviewed at the annual GSDCA Judges Committee (JC) Meeting where judges may be added and or removed upon a request from a Member Club;
- The list as reviewed by the JC Meeting will be presented to the AGM.
- Member Clubs hosting the National will have the right to choose 2 of, plus 2 reserves from a shortened list as nominated by the GSDCA Executive;
- The GSDCA SV Liaison Officer will contact judges as selected. In the event that none of the 4 chosen judges are able to accept the invitation the GSDCA Executive will liaise directly with the host Member Club and agreement sought to approach other judges as listed;
- Judges will be offered the appointment on the understanding they cannot judge in Australia for two years prior to the date of the National they have been invited to Judge.

**CARRIED.**

## 20.11 Motion:

"That all motions presented at an AGM shall demonstrate that they help to achieve one or more of the following:

- Contribute directly to the welfare of the German Shepherd Dog.
- Promote the memberships of affiliated clubs.
- Promote the image of the German Shepherd Dog as a companion dog.
- Encourage members and their German Shepherd Dogs to participating in community type events.
- Encourage sharing of information and resources between affiliated clubs."

**WITHDRAWN**

## 21 Other Matters referred to the AGM

### 21.1 Motion:

"That the Executive set the venue of the AGM and NBC meetings on a rotational basis as determined by the 'cost effectiveness' of the venue".

*The following schedule of meetings will apply and be updated on a yearly basis to ensure meetings as held are cost effective.*

	AGM	NBC
2016	ADELAIDE	SYDNEY
2017	MELBOURNE	ADELAIDE
2018	SYDNEY	MELBOURNE

**CARRIED.**

### Motion:

"That Regulation 2.7.1 be rescinded".

## 2.7 GSDCA Annual General Meeting

- 2.7.1 The determination of the venue for the GSDCA AGM will be on the following rotational basis: Every second year the GSDCA AGM will be held in either Sydney or Melbourne. In the alternate year a Member Club may seek approval to host the GSDCA AGM.

**CARRIED.**

### 21.2 Motion:

Clubs other than those nominated to host a Council meeting will be offered a subsidy towards their costs incurred on the maximum outlay by the GSDCA National Council of \$1,000 split by a ratio of kilometers travelled. If a Club chooses not to attend a meeting they are removed from the calculations, which effectively will increase the support given to the other Clubs in attendance.

#### BASED ON KMS BY AIR

Source: [http://www.worldatlas.com/travelaids/flight\\_distance.htm](http://www.worldatlas.com/travelaids/flight_distance.htm)

FROM	KMS TO ADEL	Share of \$1000 paid to Clubs	KMS TO SYD	Share of \$1000 paid to Clubs	KMS TO MELB	Share of \$1000 paid to Clubs
BRIS	1584	220.00	690	126.00	1346	226.00
NEWC	1248	173.00	123	22.00	836	140.00
CANB	970	134.00	294	54.00	436	73.00
HOB	1257	174.00	1057	192.00	592	99.00
PERTH	2154	299.00	3325	606.00	2753	462.00
	7213	1,000.00	5489	1,000.00	5963	1,000.00

**CARRIED.**

# SECRETARY'S report

## 21.3 Motion:

### Rescind Current Regulation

- 2.6.4 The NBC Registrars are required to attend the NBC Meeting and will be afforded the equivalent travel/accommodation reimbursement that applies to the GSDCA Executive.

### New Regulation

- 2.6.4 The reimbursement of expenses related to the attendance of any GSDCA officer at a meeting will only be approved by the GSDCA Executive if there is an essential requirement for that officer to report and or participate directly in the meeting.
- 2.6.4.1 If an officer is requested to attend a meeting of Council then travel, accommodation and meals will be reimbursed as applies to GSDCA Executive.

**CARRIED.**

## 21.4 Motion:

"That the "Draft GSDCA Character & Working Assessment Manual" as tabled, be adopted and that the document shall be known as "The GSDCA Character & Working Assessment Manual".

### Motion:

That the amendments recommended be accepted. **CARRIED.**

### Motion:

"That the "Draft GSDCA Character & Working Assessment Manual" with amendments as discussed, be adopted and that the document shall be known as "The GSDCA Character & Working Assessment Manual". **CARRIED.**

## 21.5 Motion:

### Rescind Current Regulation:

- 2.3 Procedure for SV Judges Clearances
- 2.3.1 The Member Club hosting the Show must write to the GSDCA Secretary no later than 12 weeks before the show date requesting an SV Judges Clearance, providing:
- a) The name of the Judge/s
  - b) The date of the event
  - c) The venue the event will be held
  - d) Request current Fees from the Secretary.

- 2.3.2 Method of payment can be either Bank Cheque or Credit Card

Option 1 – Payment by Bank Cheque

A Bank Cheque from the Member Club made payable to the "Verein Fur Deutsche Schaferhunde (SV)" for the SV Judges Clearance Fee. A separate cheque from the Member Club made payable to the "GSDCA Inc" for the GSDCA Fee for processing and registered postage.

Option 2 – Payment by Credit Card Member Club to provide Credit Card details:

- a) Type of card – "Visa" or "Mastercard" (Only),
- b) Card Number (16 digit),
- c) Card Expiry Date (4 digit)
- d) Charges to the credit card will include the SV Judges Clearance Fee and associated bank charges (Charge in Australian dollars will depend on exchange rate).
- e) Note: Credit Card information will be kept confidential at all times.

PLUS - A separate cheque from the Member Club made payable to the "GSDCA Inc." for the GSDCA Fee for processing and registered postage.

## Proposed New Regulation

- 2.3 Procedure for SV Judges Clearances
- 2.3.1 The Member Club hosting the Show must write to the GSDCA Secretary no later than 12 weeks before the show date requesting an SV Judges Clearance, providing:
- a) The name of the Judge/s
  - b) The date of the event
  - c) The venue the event will be held
  - d) Request current Fees from the Secretary.
- 2.3.2 Payment by Credit Card - Member Club to provide Credit Card details to the GSDCA Secretary:
- a) Type of card – "Visa" or "Mastercard" (Only),
  - b) Card Number (16 digit),
  - c) Card Expiry Date (4 digit)
  - d) Charges to the credit card will include the SV Judges Clearance Fee and associated bank charges. (Charge in Australian dollars will depend on exchange rate).
  - e) Credit Card information held by the GSDCA Secretary will be kept confidential at all times.
  - f) The Member Club must also forward a Member Club cheque for \$10.00 made payable to the "GSDCA Inc." for the GSDCA Administration Fee, for processing any request.

**CARRIED.**

## 22 General Business

### 22.2 Motion:

"That the 2016 GSDCA Breed forum be held in conjunction with the 2016 NBC & Judges Committee Meetings and that Member Club Presidents and their Breed Affairs Delegate, GSDCA Breed Surveyors, GSDCA GSD Judges and Trainees and GSDCA Executive are invited to participate". **CARRIED.**

### 22.4 GSDCA RESTRUCTURE

#### Motion:

"That a GSDCA Constitutional Review Working Group whose membership shall be President, GSDCA, Secretary GSDCA, President GSDL, President ACT GSDA & President GSDAWA be formed. **CARRIED.**

### 22.5 Police Dog "Rumble"

#### Motion:

The GSDCA Executive requests ratification of its decision to allow Police Dog "Rumble" to receive the GSDCA Outstanding Canine Serve Award posthumously, and the award to be presented at the GSDA of WA State Breed Exhibition to be held on 16th & 17th April 2016. **CARRIED.**



## Quarterly National Review National Edition corrections

*Apologies to those exhibitors who correctly submitted preferred photos of their dogs to be included with the printed critiques. On a number of occasions the submitted and correct photo was not printed in the magazine. By request, several of the correct photos are published below.*

### Calle v Westervenn

7th place, Open Dog  
 \* CALLE VOM WESTERVENN IPO2 (Deu) aED  
 4/05/2012  
 Labo v Schollweiher IPO3 (Deu a ED  
 \*Zimba vom Westervenn a ED  
 Catalogue No. 485  
 Exhibitor: S J & C Collins  
 Breeder: R. Jurgens



### Xeno v Arjakjo

8th place, Open Dog  
 \* XENO VOM ARJAKJO (DEU) aED  
 1/12/2011  
 \* Omen v Radhaus  
 \*Nadja v Arjakjo  
 Catalogue No. 481  
 Exhibitor: MW Pascuzzi  
 Breeder: A.Eitens



### Spelling correction

*Apologies to the owners, the spelling of the animals name was incorrectly provided with the critique and is corrected below.*

3rd Place, Open Bitch  
 \*PEDRA DEGLI ACHEI (ITY) Aed  
 12/11/2011  
 Etoo Aus Wattenscheid  
 Chei Degli Achei  
 Catalogue No. 397  
 Exhibitor: KR, RT & CA Knuckey  
 Breeder: L. Pizzorusso

*An incorrect critique was provided for printing for Exhibit 554. The correct critique is printed below.*

### Obedience Critique - Open Class

**Exh 554 C ANDERSON CH VOLSCAIN AKIRA AZ**  
 D: CH SCHNEEBERG FIRE STORM AZ ET  
 B: MOLLE V D WERTHER-MUHLE [imp DEU] AZ  
 BREEDER: VOLSCAIN KENNELS

An excellent performance. It was a pleasure to have this team in my ring. The heeling was outstanding with a missed position costing them points. Unfortunately, the dog broke from position by following its handler as they left it in the Distance Control exercise.

NON QUALIFIER

## ALDERHAUS & AIMSWAY APOLOGY

An incorrect photo appeared in the AimsWay & Alderhaus advertisement in the last National Review magazine.

I would like to state that I, Penny Alder, was solely responsible for the 4 page advertisement which involved countless hours of research and over 50 photos.

The dog shown in movement on page 99 is actually "Marlo von Baccara" and not Destroyer. Destroyer does not reside with me in WA. So when the photo printed in the advertisement was sent to me along with another, because of the way the two photos were presented together and the way they had been labelled it appeared that both photos were Destroyer. I have forwarded these two photos to the GSDCA the way they had been sent to me and they have accepted the explanation I provided to them.

As part of the same advertisement a photo of "Juwika Fitness" was incorrectly included as a "son" of Destroyer.

Fitness and Destroyer are half brothers out of the same dam and Fitness is sired by "Leo v.d. Zenteiche".

I am well aware of this fact, and I had previously congratulated "Juwika Fitness" on my Facebook page on 5th October 2015, on his "Best in Show" in Iceland under Louis Donald.

Again this information was submitted to National Council and they have accepted my explanation. The photo of "Juwika Fitness" should have had a separate heading of "Half Brother to Destroyer" and should not have been included in the Destroyer Progeny section.

I would like to state that I would never intentionally print false statements or incorrect photos. I would have nothing to gain by deliberately placing a photo of such a high profile dog as Marlo von Baccara and saying it was Destroyer. Marlo is known the world over and may easily be recognised which is exactly what has happened.

I sincerely apologise to the members and also the owners/breeders of Juwika Fitness and Marlo von Baccara for my unintentional errors.

*Penny Alder*

ALDERHAUS KENNELS  
 (This apology is paid at the advertising rates)

## Advertising Info for Members of Affiliated Clubs

*We welcome the opportunity to work with members to advertise and promote their animals or business. Ad design is included in the costing. Multiple edition packages are available by negotiation. For information or to discuss, please contact the editor.*

### Front Cover

\$300.00 (Non - Advertising)

### Back Cover

\$250.00 (Non - Advertising)

### Full Page

\$500.00

### Double Spread

\$900.00

### Half Page

\$275.00

Other advertising spaces available on request

Non-Members and/or Commercial Rates available upon request.

Please make Cheque/Bank draft or Money Order payable to: German Shepherd Dog Council of Australia Inc. and forward to:  
The Treasurer, GSDCA QNR, 20 Conrad Road, Longwood SA 5153



### Notes:

All advertisers must forward FULL PAYMENT at the time of placing their advertisement. Advertisers are advised that where an animal is over 18 months of age it must have been successfully Breed Surveyed. Any imported animals with an overseas breed survey Classification will be permitted to be advertised for 6 months following their date of release from Australian Quarantine, after this time they must have obtained an Australian Breed Survey Classification.

If you require return of photos and a receipt, please provide a self-addressed, stamped envelope.

The Trade practices Act 1974 came into force on 1st October 1974 and certain provisions of the Act relating to consumer protection place a heavy burden on advertisers, advertising agents and publishers of advertisements. In view of the difficulty of ensuring that advertisements submitted for publication comply with the Act, advertisers and advertising agents must ensure that the provisions of the Act are strictly complied with. In case of doubts advertisers are advised to seek legal advice.

## SUBSCRIPTIONS

### GSDCA QUARTERLY NATIONAL REVIEW

Please sign me up as a private subscriber!

Name: Mr / Mrs / Ms / Miss .....

Address .....

State ..... Postcode ..... Country .....

Phone ..... Email .....

Please commence my subscription for issues commencing with the:

☐ Spring 2016 ☐ Summer 2017 ☐ Autumn 2017 ☐ National 2017

Paying by: Credit Card ☐ Mastercard ☐ Visa (Please tick)

Cardholder's Name .....

Card No: ..... Expiry Date: .....

ONE YEAR. QNR Subscriptions Private Subscriber. Rates include GST, Postage and Handling for:  
Australia \$55.00 New Zealand \$63.00 AUD UK/Europe/ USA/Canada \$70.00 AUD

Please make Cheque/Bank draft or Money Order payable to:  
German Shepherd Dog Council of Australia Inc. and forward together with the completed form to:  
The Treasurer, GSDCA QNR, 20 Conrad Road, Longwood SA 5153





[www.gsdcouncilaustralia.org](http://www.gsdcouncilaustralia.org)

THE  
German Shepherd Dog  
QUARTERLY NATIONAL REVIEW