

GERMAN SHEPHERD DOG COUNCIL OF AUSTRALIA INC



GSDCA CHARACTER & WORKING ASSESSMENT MANUAL

Adopted 14 February 2016

This document is to be read in conjunction with the GSDCA Constitution,
and relevant GSDCA Manuals.

This document is the property of the German Shepherd Dog Council of Australia (Inc.)
and a copy is to be placed on the GSDCA Website for the availability of the members.



Contents

1. OBJECTIVE OF CHARACTER AND WORKING ASSESSMENT (CWA)
2. CRITERIA FOR CLASSIFICATION
3. ABBREVIATIONS
4. STRUCTURE OF THE CHARACTER AND TEMPERAMENT ASSEMENT SCHEME
 - 4.1 Chairman Obedience Committee and CW Panel Administrative Structure
 - 4.2 State CW Assessor Panels
 - 4.3 Criteria for Aspiring CW Assessors
 - 4.4 Procudure for Aspring CW Assessors
5. DEFINITION OF CLASSIFICATION
 - 5.1 CWA Pass
6. TERM OF CLASSIFICATION
 - 6.1 Period of Grading
 - 6.2 Deferment of Classification
7. IMPORTANT SPECIFIC REQUIREMENTS
 - 7.1 Character and Temperament
 - 7.2 Gun Test
8. DATES VENUES AND NOTIFICATIONS
 - 8.1 Dates
 - 8.2 Venues
 - 8.3 Notification
 - 8.4 Acceptances
 - 8.5 Advertisement
9. CONDUCT OF A CHARACTER AND WORKING ASSESSMENT
 - 9.1 Club Responsibilities
 - 9.2 Club CWA Register
 - 9.3 Club CW Assessment Register
 - 9.4 Equipment Responsibilities
 - 9.5 Confirmation of Character and Working Assessment
 - 9.6 Maximum Number of Dogs to be Assessed
 - 9.7 Processing CW Assessment Forms
 - 9.8 Risk Management at CW Assessment Events
10. ADMITTANCE RULES FOR THE CHARACTER AND WORKING ASSESSMENT



-
11. **ASSESSMENT PROCEDURE**
 - 11.1 Uniformity of Conduct
 - 11.2 General Preparation
 - 11.3 Initial General Assessment
 - 11.4 Components of the Assessment – and Objectives
 - 11.5 Sequence and Description of the Exercises in the Assessment
 - 11.6 Findings of Assessment – Completion of CW Assessment Work Sheet (Form CW3)

 12. **CLASSIFICATION AND APPEALS**
 - 12.1 Classification

 13. **ISSUE OF CW ASSESSMENT DOCUMENTATION**
 - 13.1 Duties of the National CW Assessment Registrar, Chairman Obedience Committee
 - 13.2 Issue of the Annual CW Assessment Report

 14. **AMENDMENT OF THE CW ASSESSMENT MANUAL**
 - 14.1 Procedure for Alteration to the CW Assessment Manual

 15. **APPENDICES – FORMS AND DEFINITIONS**



1 OBJECTIVE OF CHARACTER AND WORKING ASSESSMENT (CWA)

To promote and offer guidance for the uniform development of the German Shepherd Dog Breed and to consolidate and improve its character and temperament as part of the breed's inherent working qualities.

Dogs and bitches shall be awarded classification of a pass in the CWA if it is expected that they will contribute to the overall improvement of the breed in Australia.

2 CRITERIA FOR CLASSIFICATION

German Shepherd Dogs shall be graded provided that they meet the following requirements:

- 2.1 At the date of the assessment, the dog or bitch shall have attained the age of no less than twelve (12) months or no more than eight (8) years.
- 2.2 An overall grading will be given based on their character and temperament during all phases of the assessment.

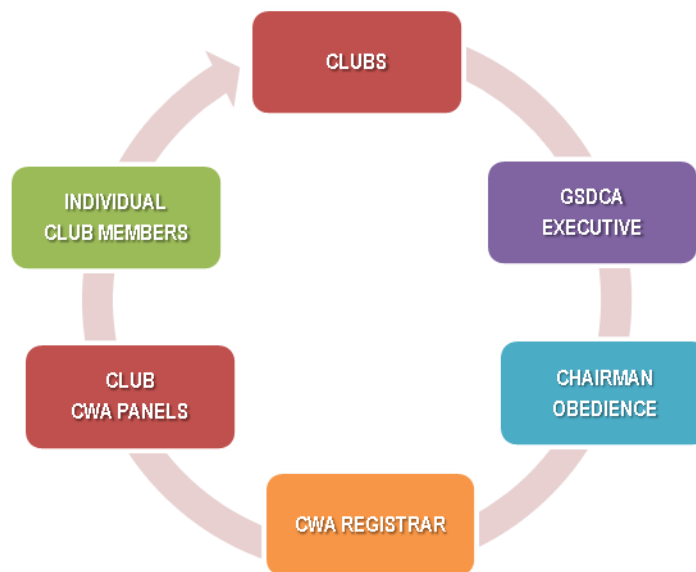
3 ABBREVIATIONS

ANKC	Australian National Kennel Control
BS Cl. I	Breed Survey Class I
BS Cl. II	Breed Survey Class II
CW	Character and Working (assessed as a Pass)
CWA	Character and Working Assessment (procedure for the test)
GSDCA	German Shepherd Dog Council of Australia
OC	Chairman Obedience Committee



4 STRUCTURE OF THE CHARACTER AND TEMPERAMENT ASSESSMENT SCHEME

4.1 Chairman Obedience Committee and CW Panel Administrative Structure



4.2 State CW Assessor Panels

4.2.1 Whilst the CWA is in a voluntary period, the Assessors can be GSDCA Breed Surveyors and GSDCA Badged Obedience Judges and Obedience Instructors appointed by the Club.

4.2.2 Once the CWA is adopted as a GSDCA approved Scheme a criteria for Assessors will be determined.

4.3 Criteria for Aspiring CW Assessors

Criteria will be developed once the CWA is adopted as a GSDCA approved Scheme.

4.4 Procedure for Aspiring CW Assessors

Procedure will be developed once the Character and Working Assessment is adopted as a GSDCA approved Scheme.

5 DEFINITION OF CLASSIFICATION

5.1 CW Pass

An overall grading will be given based on their character and temperament during all phases of the assessment.

6 TERM OF CLASSIFICATION

6.1 Period of Grading

The CW grading presented to a dog or bitch shall be for life.



6.2 Deferment of Classification

Dogs or bitches which have been graded at a previous Assessment, may also be represented at any subsequent CWA and must declare the status of any previous CWA application and result for that animal (Refer to GSDCA Form CT1, Application for CWA).

7. IMPORTANT SPECIFIC REQUIREMENTS

7.1 Character and Temperament

An overall grading will be given based on their character and temperament during all phases of the assessment.

Dogs or bitches that either show trepidation, or are overly suspicious, or are apprehensive, or wary, or visually fearful, or are aggressive without provocation, shall be graded accordingly in the CWA. Refer to Sub-sections 9.7 and 9.8.

Dogs or bitches that display significant or continuous aggressive behaviour without provocation towards other animals at the Assessment, shall be deemed not to be graded in the CWA and with agreement of the Assessor(s), may be excused from the Assessment.

Any aggressive behaviour must be noted as comments on the relevant work sheets and reports. Refer to 9.7 and 9.8.

7.2 Gun Test

Only those dogs and bitches which are sufficiently firm and unaffected during the gun test can be admitted to CW classification.

8. DATES, VENUES AND NOTIFICATIONS

8.1 Dates

The regularity of CWA dates will naturally vary from State to State, dependant on the number of dogs and bitches available.

The dates and times to be allocated in a particular State will be determined by the Club CWA

Co-ordinator in liaison with the State Club concerned and published at the commencement of the year.

Dates for CWA's must be provided to the Chairman Obedience Committee Chairman by Clubs for the following year. However for States where there is no domiciled State CWA Co-ordinator, these dates are to be provided to the Chairman Obedience Committee Chairman.

This is done in writing seeking ratification a minimum of six (6) weeks prior to the proposed assessment and should be published in their magazine and on/or the Club Website, twenty one (21) days prior to the CWA.

Scheduled dates, if not needed, may be cancelled with reasonable prior notice to club members.

8.2 Venues

It is of the utmost importance that a suitable venue is selected.

The CWA may be held on a ground that is in use by any other organisation, including a dog club, providing the conduct of the CWA is not compromised.



8.3 Notification

All assessment dates, times and venues should be published well in advance.

The Club shall notify owners of German Shepherd Dogs of the CWA dates via their Magazine and/or their Club Website and/or their normal mode of member notifications, at least, twenty one (21) days prior to the CWA.

8.4 Acceptances

The cut off point for CWA acceptance shall be not less than seven (7) days prior to the scheduled time and date. No late submissions shall be accepted.

8.5 Advertisement

It shall be a responsibility of the State CWA Co-ordinator in liaison with the Club CW Assessment Registrar and through the Club, to give adequate notice to potential applicants as prescribed above.

9. CONDUCT OF A CHARACTER AND WORKING ASSESSMENT

9.1 Club Responsibilities

The State CWA Co-ordinator and Club CWA Assessment Registrar shall, on receiving the application forms, check to see that all dogs are eligible re age, registration etc., before passing onto the relevant assessors.

9.2 Club CWA Registrar

This position shall be appointed by the Club in conjunction with the State CWA Co-ordinator.

The primary task of the Registrar will be to maintain the Club CW Assessment Register and assist in the conduct of CW Assessment events.

9.3 Club CW Assessment Register

There shall be a **CW Assessment Register** which shall be kept by the Club CW Registrar.

This Register shall contain information listed under the following headings:

Assess. No	Assess. Date	Name of Dog	Sex M/F	KC Reg No	Birth Date	ID No	Assess. Class.	CT Assessor
001	01/07/14	Pedigree Name	M	12345	01/07/13	54321	Pass	J Smith

Relevant particulars shall be recorded into the **CW Assessment Register** at the conclusion of each CT Assessment Day.

9.4 Equipment Responsibilities

It shall be the responsibility of the State CWA Co-ordinator to ensure the supply of the necessary equipment and forms on the day of the Assessment. This may be delegated to or done in conjunction with the Club CW Assessment Registrar. Refer to Sub-section 11.2 for details of equipment required.



9.5 Confirmation of Character and Working Assessment

The State CWA Co-ordinator shall confirm the event twenty four (24) hours prior to the Assessment date with the other Breed Surveyors and CT Assessors involved. This may be delegated to the Club CW Registrar.

9.6 Maximum Number of Dogs to be Assessed

The maximum number of dogs to be assessed in one Assessment day is to be determined by each State CWA Co-ordinator, with the recommended limit being 10 to 15 dogs per Assessor.

Order of Assessment

Dogs shall be assessed prior to bitches, where individual presentation is required.

At the conclusion of each Assessment day, the State CWA Co-ordinator will line up the dogs/bitches presented for the days Assessment and begin the final presentation of all the dogs by announcing:

- The total number of dogs/bitches presented for Assessment.
- The total number of dogs/bitches passing the Assessment.
- The total number of dog/bitches excused (if any) from the Assessment.
- The total number of dogs/bitches failing (if any) the Assessment, including the reason for failure.
- The total number of dogs/bitches being represented and/or recommended for Representation.

The dogs/bitches being presented for the days' Assessment shall be lined up and the CW Assessor may successively present the results of their assessment on each animal to all present.

The announcement by the Assessor in Charge as well as the assessor's statement on the status of the dog/bitch, cannot subsequently be changed. However, this does not affect any subsequent representation of the dog/bitch under rules 6.2

9.7 Processing CW Assessment Forms

The Assessor in Charge on the day shall prepare a written, signed report of the results of each assessment to the **Chairman Obedience Committee** within 14 days of the assessment recording:

- Date and location of the Assessment and officiating assessors.
- Name of dogs/bitches presented to the assessment and the assessor's name.
- The assessment grading results obtained by each dog/bitch.
- A list of dogs/bitches represented and the result of the grading must accompany such dogs.

9.8 Risk Management at CW Assessment Events

The Assessor in Charge and other Assessors shall ensure safe practise for all participants on the day and shall prepare a written, signed report if required as part of processing CWA forms. Refer to 9.7.

10 ADMITTANCE RULES FOR THE CHARACTER AND WORKING ASSESSMENT

Any pedigreed, Kennel Control registered German Shepherd Dog between the ages of twelve (12) months and eight (8) years, with basic obedience (i.e. sit, stand and walk on loose lead) shall be accepted for CWA providing the necessary procedure is adhered to. Refer to Sub-section 8.4.



11 ASSESSMENT PROCEDURE

11.1 Uniformity of Conduct

It is of the utmost importance that the procedures adopted are uniform throughout Australia. This is part of the national theme to achieve uniform breed development. Not only should the procedure be identical from State to State, but also the terminology and method of description.

It is the object of this section on Assessment Procedure to provide a standard National procedure. It is imperative that this procedure be adhered to.

11.2 General Preparation

As referred to in Sub-section 9.4, it is the responsibility of the State CWA Co-ordinator and/or Club CW Assessment Registrar to ensure that all necessary equipment is available on the day of assessment.

The items required on the day are:

- Microchip scanner,
- Start and Finish markers,
- Cones (witches hats),
- Mesh grating (approx. 6m long),(Bunnings model # 400315 1200w x 3m black x 2 off)
- Polytarp (approx. 6m long),(Bunnings model # 59033 3.6m x 5.5 m x 1 off)
- Car with suitable radio,
- Umbrella (golf),
- Bicycle,
- Suitable 6mm (0.22") Starting Pistol with sufficient blank cartridges,
- Suitable Desks and chairs for all Assessors and the Registrar is preferred, where possible.
- Arrange a crowd of eight (8) to ten (10) adults.
- The handler is required to bring their own dog's favourite plaything (toy or tug).

As indicated on the CWA Work Sheet and Plan

11.3 Initial General Assessment

The GSDCA CAWA Assessor(s) shall ask all the animals entered in the assessment to assemble for the initial assessment. During this stage all dogs submitted for Assessment must be entered in the Club CW Assessment Register, and then:

- 1) The owners shall produce the original ANKC Registration Certificate for verification,
- 2) Each dog shall individually have its Microchip and/or Tattoo verified.
The animal must be microchipped via the ANKC accepted scheme and/or tattooed via the GSDCA scheme or any other recognised/approved scheme.
- 3) The dogs shall undergo a group Gun Test:
Assessor(s) shall ask the handlers to walk to a designated position and line up the dogs in stance and on a loose leash in groups of not more than seven (7) dogs and face the dogs towards the Assessor.

The pistol shall be held pointing downward at the side, and not rear, of the Assessor. The pistol shall be fired by the Assessor or steward, twelve (12) paces from the dog, with a minimum of three (3) shots fired consecutively. The gun will be fired once and following a five (5) second delay, fired another twice consecutively within two (2) seconds. A dog who shows a wandering movement or padding will be retested on its own by the firing of more shots.

Dogs must stand sufficiently firm and confident showing no real concern for the shots discharged. The desired reaction is one of total lack of concern.



A gun sure dog normally reacts to the gun shot by standing in one spot and either, being alerted, or showing a lack of interest. A gun shy dog adversely reacts to the gun shot by not standing in one spot and either, moves around, jumps up on the handler, walks around the handler, hyperventilates, moves closer to the ground, looks fearful and anxious, sits or cringes. If the dog moves retest. The major assessment is stability to the discharge sound.

The owners of any dogs that does not satisfactorily complete each of the above points (under 11.3), or has been requested to re-present at a later date, will be notified by the Assessor(s) that they will be excused from any further part of the assessment.

The Club CW Assessment Registrar shall allocate all accepted dogs a number, and record their details on to the CW Assessment Work Sheet (Form CW 2).

If once the assessment has commenced an assessor decides that a dog/bitch does not show the required attributes to be successfully assessed, the assessor will inform the owner and the dog/bitch may/will be excused from any further part of the assessment.

11.4 Components of the Assessment – and Objectives

11.4.1 Control in public – Loose Leash Walking recommended a 1 or 2 meter lead.

The objective of this exercise is to assess the dog's willingness to work and its ability to operate as a team with the handler. The Loose Leash Walking exercise, accommodates requirements for most urban situations where a dog is required to be on lead at most times, and to respond to the handler with a level of reactivity that will allow the dog and handler to walk confidently and freely without the dog pulling on the lead or the handler controlling the dog with the lead. The complexity of the Loose Leash Walking pattern has been kept to a minimum, with the emphasis on the dog's ability and willingness to work, rather than on what it has been taught.

The overall intention is to encourage dogs and handlers who are not obedience specialists, and to provide them with an achievable target whilst still providing a test that is realistic and achievable for most dogs. There will be no points awarded for this exercise as is usual in obedience tests. The intent is to evaluate the dog's willingness and ability to work as a team with the handler. The standard of heelwork (Loose Leash Walking) should be confident and relatively responsive. There is no requirement for precision.

During the first two exercises in this section, the dog is required to be on a normal obedience lead of approximately 1 or 2 meters that can be held a little shorter when walking normally and later when standing the dog for the informal stand for examination. The walking through the group exercise is similarly a test of the dog's innate behaviour and response to commands under distractions such as moving people and dogs. The "stand for examination" exercise is basically an assessment of the dog's ability to stay where they are asked, and to allow a stranger to handle them. There must be no compulsion or reprimands used during any part of the tests.

Definition of grading:

- EXC (Excellent) Confident walking with the handler, paying attention to the distractions, striding out on a loose leash, willing to accept guidance.
- VG (Very Good) Willingness to walk with handler, Positive responses.
- G (Good) Compliant to handler's guidance, just a little unruly or disinterested.
- S (Sufficient) Dull, disinterested demeanour, tensely reacting to mounting distractions.
- P (Poor) Inadequate or inappropriate response



11.4.2 Evaluation of touch sensitivity

The objective of this exercise is to evaluate the dog's reaction to a variety of surfaces. The dog may be a little unsure at first, but will be evaluated on the recovery reaction to the surface. The Assessor will observe the reaction of the dog toward the surface, taking into account the approach to or avoidance of the surface and the investigative responses of the dog. The assessment will be made on the basis of the dog's reactions, its display of interest, and its overall reaction to the various activities. During the assessments, the dog should be allowed the full length of a 1 or 2 metre lead

Definition of grading:

- EXC (Excellent) Interest, confident striding over surface, desire to lead out.
- VG (Very Good) Positive response and willingness to lead out.
- G (Good) Positive attitude and willingness to accompany handler.
- S (Sufficent) Shying away or slow to follow, a little tense, but compliant.
- P (Poor) Inadequate or inappropriate response

11.4.3 Evaluation of sound sensitivity

The objective of this exercise is to evaluate the dog's reaction to a variety of noises. The dog may be moderately unsure at first but will be evaluated on the recovery reaction to the noise. The assessor will observe the reaction of the dog toward the noises, taking into account the approach to or avoidance of the noise and the investigative responses of the dog.

The assessment will be made on the basis of the dog's reaction to the sounds, its display of interest, and its overall reaction to the various activities. During the assessments, the dog should be allowed the full length of a 1 or 2 metre leash. :

Definition of grading:

- EXC (Excellent)Interest or acknowledgement, accepting as neutral, striding out.
- VG (Very Good)Startle response with immediate recovery and confidence.
- G (Good)Startle response with good recovery, willingness to accompany handler.
- S (Sufficent)Shying away, slow to recover, a little tense, but compliant.
- P (Poor) Inadequate or inappropriate response

11.4.4 Evaluation of sight sensitivity

The objective of this exercise is to evaluate the dog's reaction to a variety of visual stimuli. The dog may be a little unsure at first, but will be evaluated on the recovery reaction. The assessor will observe the reaction of the dog, taking into account the approach to, or avoidance of, the visual stimuli and the investigative responses of the dog. The assessment will be made on the basis of the dog's reactions, its display of interest, and its overall reaction to the various activities. : During the assessments, the dog should be allowed the full length of a 2 metre lead. These distractions are not a direct threat to the dog or handler, but simulate everyday events.

Definition of grading:

- EXC (Excellent) Interest or acknowledgement, accepting as neutral, striding out
- VG (Very Good) Startle response with immediate recovery and confidence
- G (Good) Startle response with good recovery, willingness to accompany handler
- S (Sufficent) Shying away, slow to recover, a little tense, but compliant.
- P (Poor) Inadequate or inappropriate response



11.4.5 Interaction with strangers and dogs

The objective of this exercise is to measure the dog's reaction to strangers in a non-threatening situation. The handler and the dog approach first a friendly stranger, then a crowd of strangers: During the assessments for section 2, the dog should be allowed the full length of a 1 or 2 metre lead. Observation of the dog's reaction will begin as soon as the handler/dog team and the stranger/s start walking towards each other. The assessor will observe the reaction of the dog toward the single encounter. The handler/dog team will then be asked to walk toward the crowd, where the dog is expected to be under reasonable control and not show fear, aggression or uncertainty.

Definition of grading:

- EXC (Excellent) Confident, friendly in the crowd, relaxed and confident .
- VG (Very Good) Free and easy in the crowd.
- G (Good) A little reserved in the crowd or examination, but willing to comply.
- S (Sufficent) Lacking a little self-assurance in the crowd, compliant.
- P (Poor) Inadequate or inappropriate response

11.4.6 Evaluation of play response

The objective of this exercise is to evaluate the dog's play drive. This section is arguably the most conclusive assessment of the dog's willingness to work and to interact with the handler. The Assessor will observe the reaction of the dog toward the toy/play object and retrieve article, taking into account the approach to, or avoidance of the toy/play object or retrieve article and the investigative responses of the dog.

The assessment will be made on the basis of the dog's reactions, its display of interest, and its overall reaction to the various activities. During the assessment, the dog should be allowed the full length of a 1 or 2 metre leash, or may work off leash according to the handler's preference. The handler is to provide a toy/play and a retrieve article object of their choice, provided that the article/s do not contain anything harmful to the dog.

Definition of grading:

- EXC (Excellent) Enthusiastic, strong drive, play growls, and Joyous retrieves, releases.
- VG (Very Good) Intense tugging game, and fast retrieves, releases.
- G (Good) Compliant play, willingness to interact, pounces or retrieves, releases
- S (Sufficent) Willingness to interact, no interest in toys, tuggies, or retrieves.
- P (Poor) Inadequate or inappropriate response

11.5 Sequence and Description of the Exercises in the Assessment

In order to ensure uniformity between Assessments and across the Clubs the following sequence of exercises MUST be followed.

This is offered as a general guide and fundamental explanation to Assessor(s) and all participants.

For the Sequence of the Component Exercises refer to CWA Layout Plan. This will assist in interpreting the descriptions below, as it aligns to the layout and presented order of the suggested course.

- **Walking on loose leash**

Loose Leash Walking: Description of Exercise (following the layout of the course).



The handler/dog team will start out at a designated point approximately 10 m. from the first test item. The assessor will ask the handler “Are you ready’ and then to ‘Forward’. The handler may attract the dog’s attention by use of voice command and or signals and the dog and handler will be expected to walk briskly while completing the designated course, following the markers, including a Left Turn, Right Turn and Right About Turn. (Note: *Refer to CW Assessment Layout Plan*).

The dog is expected to work on a loose lead. Not as required for the obedience ring, but manageable without constantly pulling away. When the assessor asks the handler to ‘Halt’, the handler will stop and the dog should sit or stand at his side. A command to sit or stand is permissible at this stage if required. The loose leash walking pattern follows a predetermined format and is not designed to be long or complicated. At the end of the course, including the various sub sections, the assessor will indicate that the exercise is finished. The dog is not expected to be precise at any stage and extra commands may be given as needed.

- **Polytarp, followed by Mesh grating**

Walking over unusual surfaces

The handler/dog team is to walk steadily along a designated path towards a polytarp, which will be pegged out on the ground. This will be followed by a Mesh grating, positioned along the designated path. The dog is to walk over both surfaces.

The assessment will be made on the basis of the dog’s reaction to the different surface, its display of interest, and its overall reaction to the activity. The dog may be encouraged to step onto the different surfaces but at no stage is the dog to be forced in any way.

- **Car radio turned on, followed by Car door slammed**

Sudden noise (e.g. car radio and car door)

The handler/dog team is to walk toward a parked car. When the handler/dog team is approximately 6 metres from the car, loud music is turned on. The dog is walked past the car. On a separate occasion the handler/dog team is to walk toward a parked car. When the handler/dog team is approximately 6 metres from the car, a door on the opposite side to the dog, is suddenly slammed. On both occasions the dog is expected to investigate the source of the noise and not show fear or aggression.

- **Bicycle approaches from the front, and then returns from behind**

Sudden object appearing (e.g., Cyclist)

The handler/dog team is to walk steadily along a designated path. An assistant riding a bicycle will approach the dog from the front and continue past on the dog’s side at a 2 metre distance, ringing the bell whilst passing and ignoring the dog. Once past the dog, the assistant will double back and pass the dog from behind, again, on the dog’s side, at 2 m. ringing the bell whilst passing and ignoring the dog. The assessment will be made on the basis of the dog’s reactions, its display of interest, and its overall reaction to the various activities.

- **Halt – sit or stand**

- **Approach person on chair with umbrella – umbrella opens**

Sudden object appearing (e.g., Umbrella)

The handler/dog team is to walk steadily and without stopping for approximately 20 meters, directly towards an assistant who is seated on a chair, with a closed umbrella (tip pointing to the ground), directly in the dog’s path, but facing 90 degrees to the side. As the dog passes a



marked point 2 meters from the tip of the umbrella, the assessor will ask the assistant to slowly raise the umbrella vertical, as the dog reaches a further marked point 1 meter from the umbrella, the assistant will be asked to simultaneously release the catch and slowly open the umbrella towards the dog. The umbrella will then be lowered and rested on the ground in front of the dog. The assistant will retain a hold on the shaft to prevent the umbrella from moving.

The dog, on the full length of lead is expected to move forward to investigate the umbrella. It is expected that most dogs will startle during this exercise. The dog is not expected to actually sniff or play with or attack the umbrella. The assessment is based on the dog's recovery reaction and its willingness to approach the front of the umbrella and to investigate the scene.

- **Approach by a friendly stranger**

Approach by friendly stranger

A stranger to the dog is to approach briskly. The dog is to have the full lead at this stage or the dog can be in the sit position next to the handler. When approximately 2 metres from the dog, the stranger is to greet the handler and walk forward to shake hands with the handler. The stranger will then encourage the dog to come to him/her for a pat. At this stage the handler may talk to and encourage the dog. The dog is to be encouraged to go to the stranger. The stranger is not to over-reach for the dog.

- **Walk through a group of people**

Moving through a crowd

The handler/dog team is to move freely through a milling about, chatting crowd of approximately 8-10 strangers until asked to move to the next evaluation. The dog is to be walked on a loose leash and is expected to be under reasonable control and not show fear, aggression or uncertainty. The handler will exhibit normal interaction with the dog, giving verbal instructions to walk with him, without interfering with individuals, or getting them tangled in the 1- 2 metre leash, and praising for desirable behaviour.

- **Stand for examination**

Stand for examination

The assessor will ask the handler to move forward and stand the dog. On further order, the handler may give a command to stay and shall move away from the dog informally, and stand directly in front facing the dog at the end of the leash. There is no expectation that the dog should remain perfectly still and extra commands may be given as required.

The assessor will approach the dog from the right or left front, but not direct front. The assessor will then touch the dog's head and body only. The emphasis is on dog's ability to remain steady in the standing position while being examined by a stranger. (i.e. the least 'comfortable' position to stay in). At the end of the examination the assessor will indicate that the exercise is finished. The handler may praise his dog and continue with the loose leash walking as set out in the plan.

- **Retrieve article, and play,**

Response to toy/play object

The handler is to produce the toy/play object and commence to play with the dog. The assessment will be made on the basis of the dog's reaction to the game, its display of interest, and its overall reaction to the activity. The dog may be encouraged to play, but at no stage is



the dog to be forced in any way. Play may be exhibited by interaction with the dog and handler; the dog may run off with the object or may play tug of war. The preferred action is an enthusiastic response to the tug game.

Willingness to retrieve object

The handler is to produce a retrieve article/s which may be the same article used for the toy/play object. The article is thrown for the dog and the dog is expected to make some attempt to retrieve or chase and pick up the article. The dog is not expected to retrieve to hand at this stage.

- **End of assessment**

While the actual assessment is brief, approximately 10 minutes per dog, there is a large amount of observation to be completed within this time.

11.6 Findings of Assessment - Completion of CW Assessment Work Sheet (Form CW3)

This form is to be filled out at the completion of Sub-section 11.5 of the CW Assessment Procedure. Ensure that all sections of the form are completed correctly and neatly on the day of assessment.

12 CLASSIFICATION AND APPEALS

12.1 Classification

At the conclusion of the Assessment it shall be the responsibility of the Assessor, to finally hand write and record the grading of the dogs onto the master Work Sheet (Form CW 2).

13 ISSUE OF CW ASSESSMENT DOCUMENTATION

13.1 Duties of the National CW Assessment Registrar, Chairman Obedience Committee

The Registrar shall have the responsibility for the accurate checking, filing and issuing nationally all of the CW Assessment Forms, Work Sheets and Certificates.

The Registrar shall provide all relevant material required for an quarterly CW Assessment Publication/Book to be published no later than one month after the closing dates for inclusion, i.e., the 30th April, 31st July, 31st October and 31st January of each year,

The Registrar shall attend all meetings held by the Chairman Obedience Committee and provide a annual report as determined by the GSDCA .

The Registrar shall maintain the "National CW Assessment Register".

Issuing of CW Assessment Certificates:

- On receiving the master CW Assessment Work Sheet from the State Club, the National CW Registrar shall check the Assessment Sheet to ensure all points are correct. A necessary check shall be to ensure that a dog recorded on the Assessment Sheet as "having not been assessed before", in actual fact has not been previously CW Assessed. Any anomalies are to be drawn to the attention of the OC and are not to be processed before verification by the OC.



- The National CW Registrar shall record into the "National CW Assessment Register" all relevant points and from the Club CW Register, allocate the GSDCA CW Assessment No. to the " CW Assessment Certificate".
- The National CW Registrar shall transpose all information to the "CW Assessment Certificate" plus the inclusion of GSDCA CW Assessment No., Type in the SURNAME of the Assessor, Sign as CW Assessment Registrar and affix the official appropriate classification stamp over the registrar's signature.

The master CW Assessment Work Sheet (Form CW 2) shall be filed by the National CW Registrar.
Note: Should a " CW Assessment Certificate" need correcting, it shall only be done by the National CW Registrar.

13.2 Issue of the Annual CW Assessment Report

It shall be the responsibility of the National CW Registrar to prepare a report listing all classified dogs, and relevant information, for the Chairman Obedience Committee to table at the next GSDCA AGM.

14. AMENDMENT OF THE CW ASSESSMENT MANUAL

14.1 Procedure for Alteration to the CW Assessment Manual

Any GSDCA Member Club, or CW Assessor, may put forward a recommendation for an amendment to the CW Assessment Manual, by placing an item on the GSDCA Obedience Committee Meeting agenda.

Should the GSDCA Obedience Committee Meeting agree to a change in the GSDCA CWA Manual the proposed change shall be placed on the GSDCA AGM Agenda for ratification and approval.

The proposed changes to the GSDCA CWA Manual / procedures passed at a GSDCA Obedience Committee Meeting are to be detailed individually on the GSDCA Agenda and are to be considered and voted upon on a point-by-point basis by the member Clubs.

When the changes have been approved at the GSDCA AGM a revised pdf copy of the GSDCA CWA Manual shall be circulated to all GSDCA CW Assessors, GSDCA Member Clubs and a copy placed on the GSDCA Website.

15 APPENDICES – Forms and Definitions

The following Forms and Definitions are attached below, at the end of this document.

CW1 - APPLICATION FOR CW ASSESSMENT

CW2 - CHARACTER AND WORKING ASSESSMENT WORK SHEET AND LAYOUT PLAN

CW3 - CHARACTER AND WORKING ASSESSMENT LAYOUT PLAN

GSDCA FORM CW1 - APPLICATION FOR CW ASSESSMENT

Please print all details and circle / underline / delete options on this application clearly !

To: The Club CW Assessment Registrar / Club Secretary

Telephone: (__) ____ ____

Postal Address: _____

Applicants Name: _____ Telephone: (__) ____ ____

Address: _____

State/Territory: _____ Post Code: _____

I submit the following animal to the CW Assessment being held on __/__/____ and declare that this animal has / has not been previously presented to the GSDCA National CW Assessment Scheme. (If in doubt it is the responsibility of the owner to check with the Chairman Obedience Committee Chairman). If the animal has been previously presented to a CW Assessment please supply details of such presentation.

Name of Dog: _____ Sex: Male / Female

Born: __/__/____ KC Reg. No.: (__) _____ Tattoo No.: _____

Microchip No.: _____

I have enclosed copies of the following documentation: ANKC Certificate of Registration, a Five (5) Generation Pedigree. Failure to provide all of the above documentation with this application will result in the animal being unable to participate in this particular assessment. All relevant original documentation must to be brought to the CW Assessment and shown to the officiating CW ASSESSOR.

I agree to abide by the rules and regulations pertaining to the GSDCA National CW Assessment Scheme and consent to the results of this CW Assessment being published in the GSDCA CW Assessment Publication and the GSDCA Website. I understand that a false declaration will result in the CW Assessment result being made null and void and any award that has been achieved as a result of this false declaration will be revoked.

Signed: _____

Date: __/__/____

This application must reach the Club CW Assessment Registrar no later than seven (7) days prior to the date of the assessment. Only entries on the official GSDCA application form CW 1 will be accepted. The application form is to be retained by the Club CW Assessment Registrar and a copy forwarded to the GSDCA CW Assessment Registrar with the GSDCA CW Assessment Worksheet.

